

# Alabama Woodturners Association



# Newsletter

JANUARY 2024

A member of the American Association of Woodturners  
Meeting at Hardware Park, 811 5th Avenue North, Birmingham  
Meeting time: The second Saturday of each month at 9 am  
[www.alabamawoodturners.com](http://www.alabamawoodturners.com)

## JANUARY AWA PRESIDENT'S NOTE

**Happy New Year!** We had a good time at our December holiday party. We were not taking pictures, just having a good time. If you haven't paid your dues yet, this is a good time to go ahead and take care of that.

The January program will be a panel discussion. Any topic that pertains to turning, or our club would open for discussion, topics like these:

What can we as a club do to increase our membership?

What suggestions do you have to make our meetings more interesting and fun?

Do you have any suggestions for doing our monthly meetings differently?

What do you wish someone had told you about turning when you first started turning?

What do you enjoy turning the most?

What would you like to help with, with your turning projects?

When is the best time to use a tenon, and when it is better to use a recess? When you use a tenon, what is the best way to remove the tenon?

What is the best angle for a bowl gouge? Are there different angles for the outside and the inside and bottom of the bowl?

(We are certainly not limited to these topics?)

We will also have our election of officers since we did not do that at our December meeting. If you are interested in running for office, please let us know!

For our February meeting, we will be learning about chain saw safety. It should be a worthwhile demonstration. I've learned a lot just by talking with Bill Willis. I didn't know that I knew so little about chain saws.

**We will be meeting this Friday at 2:00 to setup our meeting Saturday.**

Thanks! Terry

**CRAFT SUPPLIES USA**  
— THE WOODTURNERS CATALOG —

(800) 551-8876

<http://www.woodturnerscatalog.com>

**WOODCRAFT**  
Helping You Make Wood Work®

### IN THIS ISSUE:

President's Note - Page 1

This months information - Page 2

This months Birthday's - Page 2

Children's Hospital Christmas Tree - Page 3

What People Are Doing - Pages 4-6

Karl Harper Challenge - Page 8

### Special Articles

**Library information**  
Page 13

**Update on**  
**Turn for the Troops**  
Page 14

# AFTERNOON HANDS-ON WORKSHOP WITH CARL CUMMINS

"Saturday afternoon Carl Cummins will offer a hands-on workshop in Spindle Gouge Technique. This is intended for those relatively new to woodturning or anyone who wants to brush up on technique. Space is limited to 6 participants. If you want to attend please contact Carl at [alawoodturners@gmail.com](mailto:alawoodturners@gmail.com)."



## JANUARY BIRTHDAYS

STEVE MILLS	1-1
RICHARD SERVISS	1-2
TERRY WHITE	1-6
BILL BRADSHAW	1-11
PAT JOHNSON	1-12
BRUCE TENISON	1-12
DWIGHT HOSTETTER	1-14
JAMES WEBB	1-17
JERRY CONWAY	1-22
JOHN SOWELL	1-22
NANCY DEASON	1-29

*Dues MUST be CURRENT to be included in the birthday list.*

## Birthday Door Prize News

AWA gives a birthday gift door prize to a turner who has a birthday during the month of that meeting. Here are the 'rules' for this year:

- 1) This is a door prize so, yes, you need to be at the meeting and stay for the drawing to win.
- 2) You need to make sure the Secretary and/or Newsletter Editor have your correct birth date. No fair changing your birth date in the middle of the year! You're stuck with the one they originally gave you!

***MEMBERS DUES MUST BE CURRENT TO BE INCLUDED IN THE BIRTHDAY LIST.***



Children's  
of Alabama®

**Alabama Woodturners Association  
(AWA)  
Supporting  
Children's Hospital of Alabama**



On November 5th, AWA was represented well at Childrens Hospital with the late Bill West's Daughter, Granddaughter, and Great Granddaughter (photo below) decorating our Christmas tree. A simple artificial tree waited for the West family's magic and the magic did happen once again. Thanks to an additional donation of ornaments, the decorating started with about 320 ornaments and finished with only 17 left unused.



*Bill West's Daughter, Grand Daughter and Great Grand Daughter decorated the AWA Children's Hospital tree.*

Our decorated tree was center stage in the main lobby at Children's Hospital from November 5<sup>th</sup> until December 6<sup>th</sup>. Then the tree was purchased and donated for a second time by the Warren Family to the Encore Program. Encore is a respite program for individuals with dementia. The tree was part of Encore's Side by Side Community Concert which raises funds for scholarships for participants who cannot afford the full cost of one day of respite care per week.

Witnessing the dressing of our tree at Childrens Hospital to watching individual's frenzied purchase of ornaments and the denuding of the tree at the Encore Concert was very rewarding. In 2023, AWA helped two great local organizations make certain that those families who lack financial resources are able to take care of their love ones with compassion.



# WHAT EVERYONE HAS BEEN DOING



**CHRIS HENLEY**



**MAURICE CLABAUGH  
BARK INCLUSION**



**MAURICE CLABAUGH  
HIGH SIDES**



**SANDRA McMILLAN**



**MAURICE CLABAUGH  
TEXAS MAP**

# WHAT EVERYONE HAS BEEN DOING



HOWARD KING



HOWARD KING  
TOP VIEW



HOWARD KING



HOWARD KING  
VIEW 2

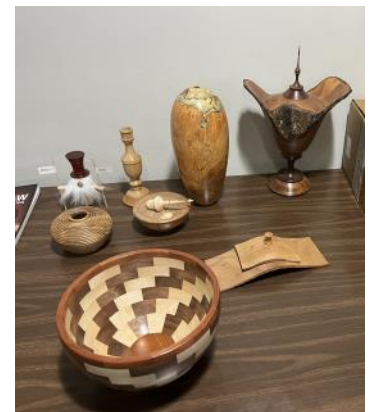


# WHAT EVERYONE HAS BEEN DOING



JEFF WYATT

## THESE ARE THE ONLY PICTURES WE HAVE FROM LAST MONTH



If anyone took pictures last month at the Christmas meeting please share. (text to me @ 859-494-4577) I will add them to the newsletter so it can be updated on the website.

Thank you in advance,  
Michelle

## AWA LIBRARY

The materials in the AWA Library are now available for checkout. Since this is a new system (it actually began in 2020 but right before the Covid shutdown) I'd like to go with the following procedures and see how well it works. Your feedback is welcome.

1. A chart listing the materials will be available on the AWA website. You can find it on the "Learning" tab at "Library Listing" which is a link to <https://alabamawoodturners.com/wp-content/uploads/2020/03/AWA-Library.pdf> The materials are grouped according to type: DVDs, Books, Magazines. If you want to check any item(s) out please let me know by sending an email to [alawoodturners@gmail.com](mailto:alawoodturners@gmail.com) prior to the next scheduled meeting. Please give me both the item number and its title so I can make sure I get the correct item.
2. The day of the meeting I'll pull these items from where they are stored. I'm going to plan to be in that room in the other building, i.e. the Red Mountain Makers space, from about 8:15 - 9:00 in case anyone wants to come browse and see what's in the library. Around 9:00 I'll bring any requested materials to the Hardware Park meeting room and check them out. I'll probably plan to stay at the meeting until around 9:30, but if you want an item and are going to be late let me know so I can stay until you get there.
3. Items will be checked out for one month, so they will be due back at the next monthly meeting. If you need to keep something longer please let me know; as long as no one else has requested it there shouldn't be a problem with keeping it an additional month. Questions, problems, suggestions, etc. can be sent to me at the above email address or see me at the meeting.

Thanks,  
Jane Rabey  
AWA Librarian

### Why join the AAW?

Plain and simple, you are enthusiastic about woodturning.

An AAW membership offers you access to the single largest portfolio of high-quality educational woodturning resources available in the world. Membership is the fastest way to learn and enhance your woodturning expertise.

#### An AAW membership can help you:

- Experience the remarkable world of woodturning.
- Connect with others who share your passion.
- Be an active and knowledgeable member of the woodturning community.
- Make a commitment to your own personal and creative development.
- Express your dedication to preserving woodturning for future generations.

#### With an AAW membership you have access to:

- 3,000+ online projects, articles, videos, and tips are in AAW's Explore! search tool. Get the best project instructions, technique guidelines, and information in just a few simple clicks. Easily searchable by topic and includes all interest areas.
- 12,000+ images of member work are in AAW's Forum gallery online. Get inspiration, ideas, and feedback simply. Connect with woodturning enthusiasts using this member-moderated virtual community.
- 475+ online videos are quickly searchable by topic in AAW's Video Source. Avoid the frustration of searching YouTube. Get relevant woodturning videos in just a few clicks. All videos are prescreened by the AAW for quality content and safety.
- 150+ issues of American Woodturner are online with a searchable index.
- 38+ issues of Woodturning FUNDamentals publication and the Woodturning FUNDamentals online learning portal offer one-stop basics. Helps newer turners build and expand their woodturning knowledge and skills safely with a curated selection of information, projects, tips, and videos.
- 365 affiliated chapters are all easily searchable in our directories. Find a chapter near you fast. Also, search for symposia, demonstrations, exhibitions, events, organizations, and schools, and more, quickly and easily.

## The Karl Harper Perpetual Challenge

AWA has established a perpetual turning challenge in memory of Karl Harper. This challenge is an excellent remembrance of Karl as he continuously expressed a 'try anything' spirit and was an inspiration to us all.

This is how it works: A piece will be turned by a member to be presented at the next meeting. A name will be drawn from the sign-in sheet at that meeting. If the person whose name is drawn accepts, they will take that piece to keep and will bring a piece the following month. If they decline, then another name will be drawn until someone accepts the challenge.



If you question your skill level, **don't!** Karl never did! You are good enough at whatever level you are! Karl would want us to put a bag over our heads before we turned because he thought 'Lights are for people with disabilities!'

Terry Tingle turned a candlestick for the November challenge, won by Wayne Bagwell (for January).



If you want to watch the video of Karl Harper turning here is the link!  
[https://www.youtube.com/watch?v=n\\_XGRjlvMDk](https://www.youtube.com/watch?v=n_XGRjlvMDk)

COPY & PASTE  
Also on the AWA website.

### Turning Pens for Troops

Turning pens for the troops sponsored by Woodcraft has been a long-time project of our club. This project provides pen to our troops all over the world. Several of our members have met soldiers that have received a pen. All the service members speak of how much this meant to them and that they still have the pen. Last year, our club turned in over 323 pens! How the program works is that for every pen that we turn in Woodcraft gives us a slimline pen kit to make another one with. This makes it very important that if you pick up a pen kit at a meeting, that you complete the pen before the next meeting.

Pen for Troops is going well. More and more members are turning pens in. When you turn the pen in, there needs to be written a message on the card that comes with the kit. The message should be addressed to whoever will be getting your pen. One member has started to put his email address on it also. Hopefully, they will hear back from whoever gets the pen. Recently pens have been turned in by Terry Tingle, Bill Calderwood, Jack Webb, and Steve Burgess.

David Fancher



## LEADERSHIP

President: Terry Tingle  
Vice President: Harold Deason  
Secretary: John Rhymes  
Treasurer: Carl Cummins  
Board: Scott Arnold  
Board: Tom Corbett

Board: John Sowell  
Board: Richard Serviss  
Librarian: Jane Rabey  
Training: Under Development  
Newsletter: Michelle Marken  
Webmaster: Carl Cummins