

Alabama Woodturners Association



Newsletter

DECEMBER 2023

A member of the American Association of Woodturners
Gardendale Presbyterian Church, 200 Tarrant Road, Gardendale, AL 35071 (December ONLY)
Meeting time: The second Saturday of each month at 9 am
www.alabamawoodturners.com

DECEMBER AWA PRESIDENT'S NOTE

We have had a good year, all things considered. It has been possible due to your contributions to the club and your willingness to offer demos. Our outside demonstrators provided a good variety of learning opportunities. Mark Sillay with his demo on wood slicing, Steve Prichard with his Gonk. Charlie Durham on turning natural edge bowls. Glen Cowen showed us how to use alcohol paints on hollow forms. Our own folks hosted all our other meetings. A big thanks to Howard King for demonstrating how to do a beaded bowl; to John Sowell for his demo on bottle openers and bottle stoppers; to Dwight Hostetter in showing us how to make a Christmas hat ornament; to Carl Cummins for demonstrating how to use a story board and other spindle turning techniques to make candle holders; to Bill Calderwood for his very interesting demo on turning a Celtic knot; and to Pete Marken and his lesson on segmented bowls. I hope this next year will offer us as good opportunities as this year.

Our club exists due to the cooperation of all our members. One of our focuses this next year will be on recruiting new members. We are open to suggestions from each of you on how we do that. Maybe we begin working with senior centers. I am sure if we put our imaginations to work, we can figure out how to work on increasing our membership.

I am looking forward to our year-end holiday celebration. We have some great grand prizes and raffle items, not to mention delicious food and fellowship with a great bunch of folks.

Terry

CRAFT SUPPLIES USA
— THE WOODTURNERS CATALOG —

(800) 551-8876

<http://www.woodturnerscatalog.com>

WOODCRAFT
Helping You Make Wood Work®

IN THIS ISSUE:

President's Note - Page 1
This months information - Page 2
This months Birthday's - Page 3
Last months Recap - Page 3
End of the year Auction - Page 4-6
Children's Hospital Christmas Tree - Page 7
What People Are Doing - Pages 8- 12
Karl Harper Challenge - Page 14

Special Articles

Library information
Page 13

Update on
Turn for the Troops
Page 14

DECEMBER INFORMATION

Due to the nature of the party/meeting and change in location, there will be no Zoom

For our December meeting we will continue the tradition of holding our annual Holiday Party. There are many ways this is different from our usual monthly meeting. The location and start time are different than usual. We will meet at the Gardendale Presbyterian Church, 200 Tarrant Road, Gardendale, AL 35071. The church is just a few minutes from I-65. For directions see end of this article. We will start officially at 11:00 AM, but you are welcome to come early to help set up.

Of course spouses and friends are welcome as guests. These are the agenda items, but not necessarily in any order:

Gift exchange - If you bring a gift, you will get a gift.

Raffle Grand Prize drawings - We will draw from all tickets collected this past year. Prizes are a Oneway Talon Chuck with insert, value \$270, a Woodcraft Gift Certificate value \$200, and a battery-powered pruning saw, value \$70. Only current members are eligible.

Election of Officers - If you want to run for an Office or Board position, speak up.

Auction - We will offer items donated by members, and a few premium woodturnings. See article elsewhere in the newsletter. Bring cash, check, or credit card. The auction is open to anyone via email. You may forward the details to anyone you think may be interested.

Karl Harper Challenge drawing - All members are eligible (but it's optional).

Birthday drawing - for a gift certificate if the name drawn is in attendance.

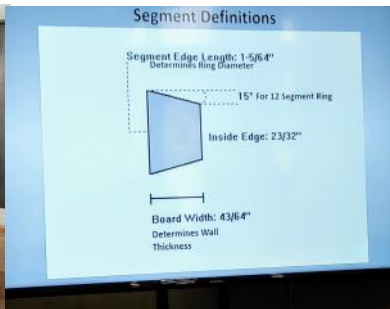
Door prize drawing - All who attend are eligible.

Dinner details - The AWA is providing turkey and ham. AWA is also providing tea, both sweet and unsweet along with ice. If you prefer some other soft drink (besides water) or you want a particular sweetener for tea, please bring it yourself. Club members are bringing side dishes and desserts. See separate emails for details.

We will not do Instant Gallery / Show & Tell - Please save this for next month.

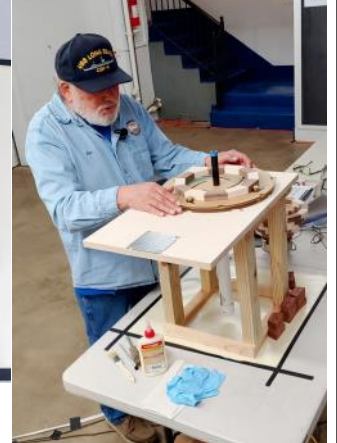
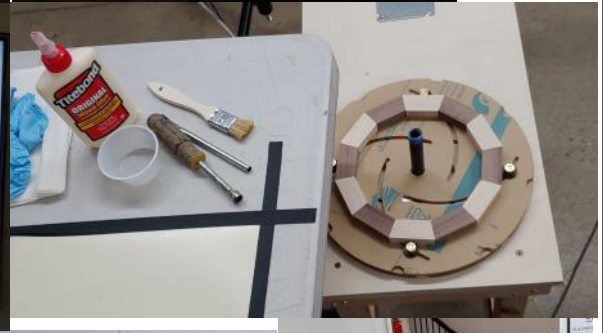
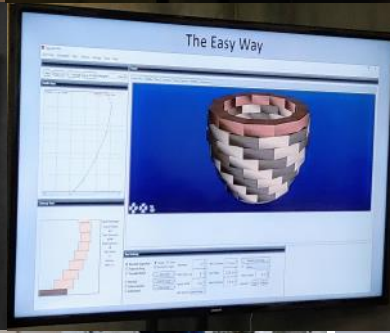
Directions to Gardendale Presbyterian Church, 200 Tarrant Road, Gardendale, AL 35071: From I-65 take the Fieldstown exit and turn east. (If you are coming from the North, turn left. If you are coming from the South, turn right.) Go to Highway 31, turn right. Go to Tarrant Road, turn left. Church is about 1 block on the left, if anyone gets lost, they can call Terry and he'll help. 256-339-4030

RECAP OF NOVEMBER DEMO WITH PETE MARKEN



- ### Additional Equipment Considerations
- Table saw for cutting segments (Preferred)
 - ⊕ Miter saws can be used but setup time is time consuming. Test joints have to be cut for dialing in the miter angle. This results in wasted wood and time. If you change the number of segments the dialing in process must be done again.
 - ⊕ Band saws can be used but the quality of the cut is not as good as a table saw. The saw must be perfectly set up with no blade drift or flutter.
 - A very accurate sled for cutting perfect segments.
 - Away to center and align rings when gluing and stacking.
 - Hose clamps for gluing segments into rings.
 - A means of flattening rings for proper stacking.
 - ⊕ Drum sander works best. (Avoid using a planer)
 - ⊕ You can use Cole jaws with a sanding block on the lathe.

- ### Why Segmented Turning?
- You are not limited to size and form dictated by a block of wood.
 - The size and form are determined by your imagination.
 - Expensive hollowing systems for turning urns or vases are not required. They can be hollowed in two or more sections and glued together.
 - You typically do not have to deal with troublesome end grain.
 - Different species of wood can be combined to obtain striking patterns.
 - Less wood wasted



DECEMBER BIRTHDAYS

JOHN NICHOLS	12-6
MARY VAUGHN	12-25
CARL CUMMINS	12-28
JIM JOHNSON	12-28
JAMES GILBERT	12-30

Dues *MUST* be *CURRENT* to be included in the birthday list.

Birthday Door Prize News

AWA gives a birthday gift door prize to a turner who has a birthday during the month of that meeting. Here are the 'rules' for this year:

- 1) This is a door prize so, yes, you need to be at the meeting and stay for the drawing to win.
- 2) You need to make sure the Secretary and/or Newsletter Editor have your correct birth date. No fair changing your birth date in the middle of the year! You're stuck with the one they originally gave you!

MEMBERS DUES MUST BE CURRENT TO BE INCLUDED IN THE BIRTHDAY LIST.

Auction 2023

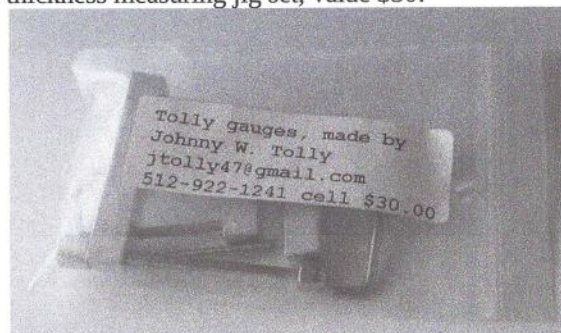
At our December meeting we will hold our annual fundraising auction. Members are encouraged to donate items for this event. Tools are especially attractive but all donations will be appreciated.

This auction is open to everyone, members and non-members. Anyone who cannot attend the meeting can submit bids in email (see details below*). Email bids must be received by Friday, December 8.

Steve Pritchard, our guest demonstrator in May of this year, donated this attractive/amusing Gonk:



John Killian donated this thickness measuring jig set, value \$30:



Carl Cummins donated this Thompson Tools 3/8" Detail Gouge, value \$55, plus 3/8" handle adapter \$22, with a handle turned from Ash.



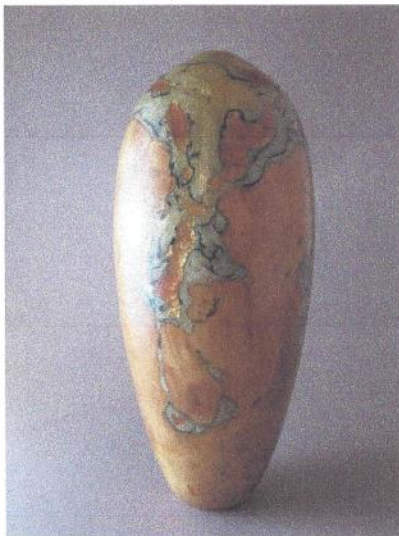
From the Bill Hubbard Collection:

These items have a "Reserve", so if the highest bid does not meet or exceed the Reserve then the item will not sell.

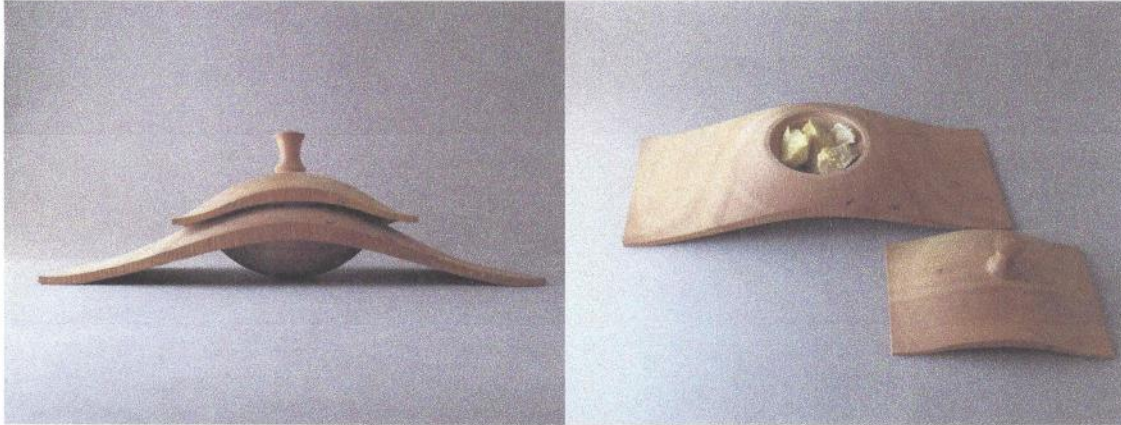
Howard King winged vessel, "Bradford Pear - Walnut" estimated value \$125-\$250



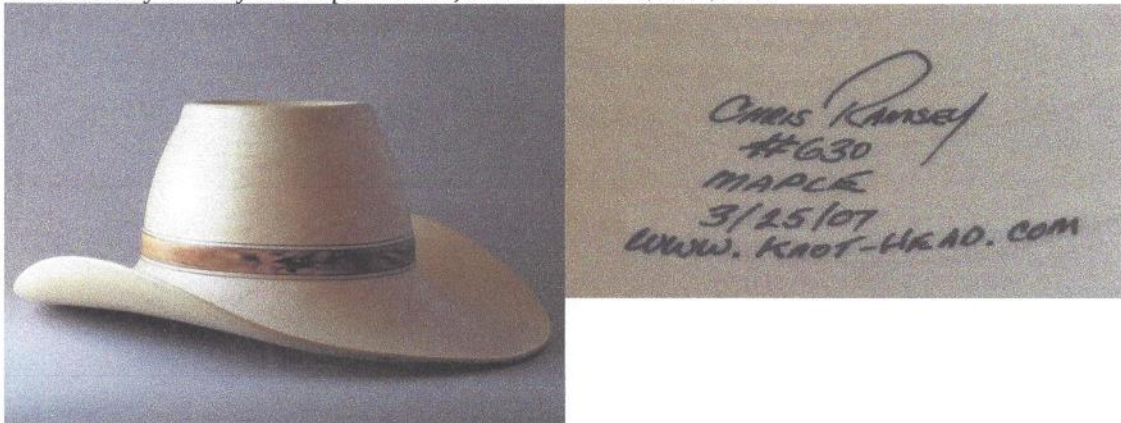
Hollowform Vessel in Box Elder with Inlay, estimated value \$75-\$150



Jimmy Clewes rectangular lidded bowl "Demo", estimated value \$100-\$200



Chris Ramsey cowboy hat Maple 3/25/07, estimated value \$500-\$1000



* Those who cannot attend the meeting in person can submit bids via email. Carl Cummins will receive the emails, and, keeping your bid information confidential, will serve as proxy to bid for you. To place bids send an email no later than Friday December 8 to alawoodturners@gmail.com including
Your name and phone number
Item description
Initial bid amount
Maximum bid amount

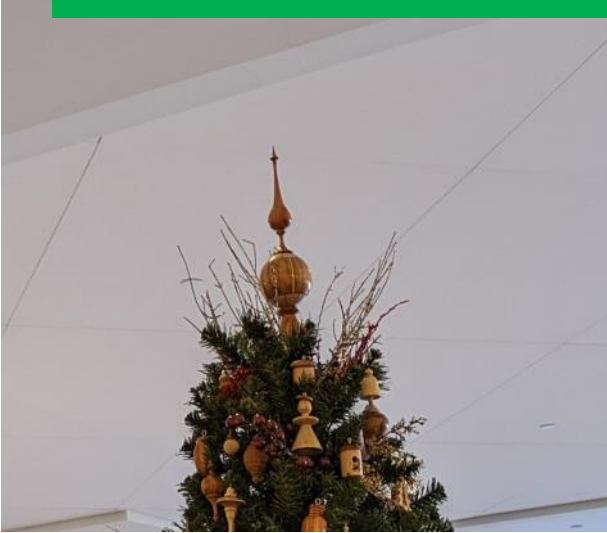


Children's
of Alabama®

Alabama Woodturners Association
(AWA)
Supporting
Children's Hospital of Alabama



**THE TREE AT
CHILDREN'S HOSPITAL OF ALABAMA**



Tree topper by Dwight Hostetter



Bill West's Daughter, Grand Daughter and Great Grand Daughter decorated the AWA Children's Hospital tree.



Sections of tree collage

WHAT EVERYONE HAS BEEN DOING



BRENT CLAYTON



BRENT CLAYTON



DWIGHT HOSTETTER



BRENT CLAYTON



DWIGHT HOSTETTER

WHAT EVERYONE HAS BEEN DOING



JOHN SOWELL



**LYNN BASWELL
PEPPERMILL**



JACK WEBB



**MAURICE CLABAUGH
PECAN WAVE**

WHAT EVERYONE HAS BEEN DOING



DWIGHT HOSTETTER



TOPS FOR DR. KILLIAN AND A FEW RECIEPENTS



HOWARD KING
3 Different views of the same vessel

WHAT EVERYONE HAS BEEN DOING



**MAURICE CLABAUGH
BIRD SHOT PECAN**



**MAURICE CLABAUGH
CHERRY BASKET**



**MAURICE CLABAUGH
SWAMP**

WHAT EVERYONE HAS BEEN DOING



RANDY TYNER
3 Views of the same piece.



CARL CUMMINS
MAPLE BURL

AWA LIBRARY

The materials in the AWA Library are now available for checkout. Since this is a new system (it actually began in 2020 but right before the Covid shutdown) I'd like to go with the following procedures and see how well it works. Your feedback is welcome.

1. A chart listing the materials will be available on the AWA website. You can find it on the "Learning" tab at "Library Listing" which is a link to <https://alabamawoodturners.com/wp-content/uploads/2020/03/AWA-Library.pdf> The materials are grouped according to type: DVDs, Books, Magazines. If you want to check any item(s) out please let me know by sending an email to alawoodturners@gmail.com prior to the next scheduled meeting. Please give me both the item number and its title so I can make sure I get the correct item.
2. The day of the meeting I'll pull these items from where they are stored. I'm going to plan to be in that room in the other building, i.e. the Red Mountain Makers space, from about 8:15 - 9:00 in case anyone wants to come browse and see what's in the library. Around 9:00 I'll bring any requested materials to the Hardware Park meeting room and check them out. I'll probably plan to stay at the meeting until around 9:30, but if you want an item and are going to be late let me know so I can stay until you get there.
3. Items will be checked out for one month, so they will be due back at the next monthly meeting. If you need to keep something longer please let me know; as long as no one else has requested it there shouldn't be a problem with keeping it an additional month. Questions, problems, suggestions, etc. can be sent to me at the above email address or see me at the meeting.

Thanks,
Jane Rabey
AWA Librarian

Why join the AAW?

Plain and simple, you are enthusiastic about woodturning.

An AAW membership offers you access to the single largest portfolio of high-quality educational woodturning resources available in the world. Membership is the fastest way to learn and enhance your woodturning expertise.

An AAW membership can help you:

- Experience the remarkable world of woodturning.
- Connect with others who share your passion.
- Be an active and knowledgeable member of the woodturning community.
- Make a commitment to your own personal and creative development.
- Express your dedication to preserving woodturning for future generations.

With an AAW membership you have access to:

- 3,000+ online projects, articles, videos, and tips are in AAW's Explore! search tool. Get the best project instructions, technique guidelines, and information in just a few simple clicks. Easily searchable by topic and includes all interest areas.
- 12,000+ images of member work are in AAW's Forum gallery online. Get inspiration, ideas, and feedback simply. Connect with woodturning enthusiasts using this member-moderated virtual community.
- 475+ online videos are quickly searchable by topic in AAW's Video Source. Avoid the frustration of searching YouTube. Get relevant woodturning videos in just a few clicks. All videos are prescreened by the AAW for quality content and safety.
- 150+ issues of American Woodturner are online with a searchable index.
- 38+ issues of Woodturning FUNDamentals publication and the Woodturning FUNDamentals online learning portal offer one-stop basics. Helps newer turners build and expand their woodturning knowledge and skills safely with a curated selection of information, projects, tips, and videos.
- 365 affiliated chapters are all easily searchable in our directories. Find a chapter near you fast. Also, search for symposia, demonstrations, exhibitions, events, organizations, and schools, and more, quickly and easily.

The Karl Harper Perpetual Challenge

AWA has established a perpetual turning challenge in memory of Karl Harper. This challenge is an excellent remembrance of Karl as he continuously expressed a 'try anything' spirit and was an inspiration to us all.

This is how it works: A piece will be turned by a member to be presented at the next meeting. A name will be drawn from the sign-in sheet at that meeting. If the person whose name is drawn accepts, they will take that piece to keep and will bring a piece the following month. If they decline, then another name will be drawn until someone accepts the challenge.



If you question your skill level, **don't!** Karl never did! You are good enough at whatever level you are! Karl would want us to put a bag over our heads before we turned because he thought 'Lights are for people with disabilities!'

Terry Tingle turned a candlestick for the November challenge, won by Wayne Bagwell.



If you want to watch the video of Karl Harper turning here is the link!
https://www.youtube.com/watch?v=n_XGRjlvMDk

COPY & PASTE
Also on the AWA website.

Turning Pens for Troops

Turning pens for the troops sponsored by Woodcraft has been a long-time project of our club. This project provides pen to our troops all over the world. Several of our members have met soldiers that have received a pen. All the service members speak of how much this meant to them and that they still have the pen. Last year, our club turned in over 323 pens! How the program works is that for every pen that we turn in Woodcraft gives us a slimline pen kit to make another one with. This makes it very important that if you pick up a pen kit at a meeting, that you complete the pen before the next meeting.

Pen for Troops is going well. More and more members are turning pens in. When you turn the pen in, there needs to be written a message on the card that comes with the kit. The message should be addressed to whoever will be getting your pen. One member has started to put his email address on it also. Hopefully, they will hear back from whoever gets the pen. Recently pens have been turned in by Terry Tingle, Bill Calderwood, Jack Webb, and Steve Burgess.

David Fancher



LEADERSHIP

President: Terry Tingle
Vice President: Harold Deason
Secretary: John Rhymes
Treasurer: Carl Cummins
Board: Scott Arnold
Board: Tom Corbett

Board: John Sowell
Board: Richard Serviss
Librarian: Jane Rabey
Training: Under Development
Newsletter: Michelle Marken
Webmaster: Carl Cummins