

# Alabama Woodturners Association



# Newsletter

**AUGUST 2023**

A member of the American Association of Woodturners  
Meeting at Hardware Park, 811 5th Avenue North, Birmingham  
Meeting time: The second Saturday of each month at 9 am  
[www.alabamawoodturners.com](http://www.alabamawoodturners.com)

## AUGUST AWA PRESIDENT'S NOTE

I have been really looking forward to Glen Cowen, who is going to be our August demonstrator. The area where we have our classes can be hot this time of year. But there is an area that we normally go through to reach the class area, that is air conditioned. And we encourage anyone who feels like they are getting too hot to take a break in that area. It also has a small refrigerator. Take yourself water or soft drink, just leave money in the jar there for it. We are also going to have a couple of 5-gallon buckets filled with ice in front of two big fans. (It can't hurt!) I figure anything we can do to help with the heat will be appreciated.

Remember, if you wish to take Glen's class, please go to Red Mountain Makers site, sign in, click on the classes, and register. Class will be just \$10.00 for our club members. It will be well worth the \$10.00. Before Covid hit, we were doing a President's challenge each month. It is hard for me to choose a topic because we are at so many different levels of proficiency. We have members who are very new to turning to folks who have been turning 30 to 40 years, and all kinds of levels in between. So how to pick a challenge that fits all our club members. I will be giving this some thought for the next few meetings. For this month, the challenge will be to turn, or attempt to turn something you have never turned before. You don't have to be successful either. Pick a project and try your hand and let us know how it turns out. Bring it to the meeting if you choose. Tell us what you learned, or what you learned not to do. Sometimes that is as important as what to do.

When I did my pen demo last year, the two comments or questions where, why don't you drill the blank on the lathe, and do you apply a CA finish? Since then, I have started putting a CA finish on most of my pens and have used the lathe to drill every pen blank. So, I may have learned more in doing that demo, about pen turning than y'all. My point is, don't be afraid to do a demo, because others may do it better, or differently than you. You just might learn a more efficient way of doing what you already do well.

We have our demos scheduled for this year, and one for next March, but it is not too early to be thinking and planning for next year. Is there something you would like us to investigate? Please let Harold Deason or me know. Harold, as vice-president oversees securing demonstrators, so please get with him with your ideas! As always, be safe and alert every second you are turning. It only takes a split second of inattention to be injured when working with machines such as lathes. I hope you are all keeping cool in this heat. It is hard to believe that it gets so hot so quickly in the day now. If you are working in a hot space, remember to take breaks often, and keep hydrated!

**IF YOU ARE ABLE, PLEASE JOIN US ON FRIDAY AT HARDWARE PARK AT 2:00 TO SETUP FOR THE MEETING ON SATURDAY.**

Terry

**CRAFT SUPPLIES USA**  
— THE WOODTURNERS CATALOG —

(800) 551-8876

<http://www.woodturnerscatalog.com>

**WOODCRAFT**  
Helping You Make Wood Work®

### IN THIS ISSUE:

President's Note - Page 1  
This months information - Page 2  
This months Birthday's - Page 3  
Last months Recap - Page 3  
Ornament information - Page 4  
Special Announcement - Page 5  
What People Are Doing - Pages 7 - 11  
Karl Harper Challenge - Page 12

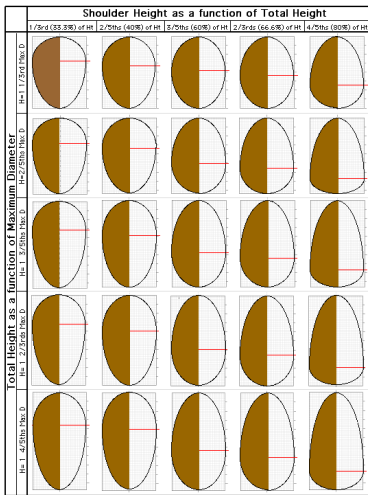
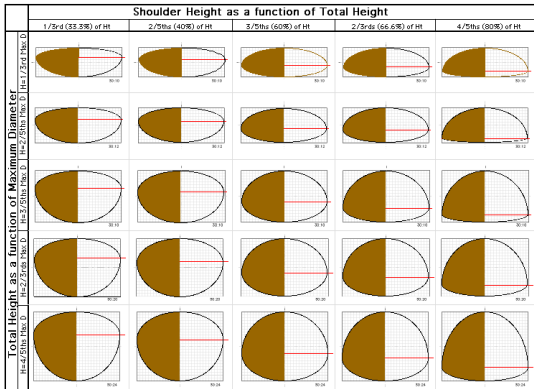
### Special Articles

**Bill Hubbard Auction**  
Page 2

**Library information**  
Page 5

**Norwegian Woodturning**  
Cruise  
Page 6

# AUGUST DEMONSTRATOR GLEN COWEN



The morning demonstration will cover making two-piece hollow forms, methods to determine shape/proportion, an introduction to applying inks, and finishing.

In the afternoon, I will be focusing on the application of both alcohol and water-based inks to create wood grain patterns on woodturnings and other woodworking projects. This is a great way to accent "plain" wood and create a piece with great color and grain figure. The class will cover the needed base coats, application of the inks, and easy high gloss finishing. Each participant will have the opportunity to practice applying the inks, a great time to explore your artistic skills. I will provide all the supplies needed.

**From Terry:** I will announce this Saturday at the meeting, and maybe since the newsletter just went out, send something to our members about this, so the folks who aren't at the meeting will know what Glen will be doing.



FROM  
BILL  
HUBBARD'S  
COLLECTION

This month we are offering this small, attractive bowl. It is 3-7/8" in diameter, and 1-1/2" tall. It appears to have been made by gluing layers of wood, then turned. It is signed "#109 By Bob" but we don't know the woods used nor the maker's full name.



# RECAP OF JULY'S DEMO WITH DWIGHT HOSTETTER



For the July demonstration, Dwight demonstrated how to make a Cowboy Hat Christmas tree ornament. It only took 45 to 60 minutes to make a hat ornament once you get the hang of it. If you mess up, just toss it and get another piece of wood. It's cheap and grows on trees.



## AUGUST BIRTHDAYS

STEVE SIMCIK	8/2
RANDY HARRISON	8/11
BOB ROSSER	8/17
TOM CORBETT	8/22
LEE BEADLES	8/26
SANDY BISHOP	8/28

**Dues MUST be CURRENT to be included in the birthday list.**

## Birthday Door Prize News

AWA gives a birthday gift door prize to a turner who has a birthday during the month of that meeting. Here are the 'rules' for this year:

- 1) This is a door prize so, yes, you need to be at the meeting and stay for the drawing to win.
- 2) You need to make sure the Secretary and/or Newsletter Editor have your correct birth date. No fair changing your birth date in the middle of the year! You're stuck with the one they originally gave you!

**MEMBERS DUES MUST BE CURRENT TO BE INCLUDED IN THE BIRTHDAY LIST.**



Children's  
of Alabama®

**Alabama Woodturners Association  
(AWA)  
Supporting  
Children's Hospital of Alabama**



You may have been present for AWA's June meeting and heard our visitors who shared their long history of purchasing AWA Christmas tree at Children's fundraiser. Mike and Anne Warren have bought our tree for at least 14 times. Anne explained how their contribution benefits Children's and what they have chosen to do with the tree after they purchased it.

Anne Warren explained that in 2022 Children's benefitted by \$5000 from her family's purchase. The Warrens kept their gift multiplying by gifting the tree to a second local organization, Encore. Patti Williams, the program director with Encore, shared information about Encores support to individuals with dementia and their care givers. She told us that Encore chose to sell the individual ornaments and raised \$6000 for their programs. All totaled, the 2022 AWA Christmas tree raised \$11,000 for our community benefitting both our young and old neighbors.

In summary, we might estimate that the outcomes of AWA efforts in 2022 were:

1. 300 ornaments equaled \$11,000 to two charities
2. On average, each ornament created \$35 for organizations locally
3. If it is estimate that an experience turner can produce one ornament every 30 minutes 300 ornaments took 9,000 minutes or 150 hours
4. AWA member volunteers effort equaled \$73.34 per hour rate for their in-kind services
5. **Bottom line is that two worthy organizations benefitted significantly**

The AWA members who have contributed ornaments for this year's tree through July 2023 deserve a big THANK YOU. They are:

Brent Clayton	Sandy Bishop	Sandra McMillan
Ron Herbster	Jerry Hanchey	
Dwight Hostetter	Carl Cummins	

*We are more than half way to our goal of 300 ornaments. All we need to get there is more members to contribute ornaments. We have three meetings including August to go before it is time to decorate.*

August 5, 2023		
Snapshot of the Collection of		
Christmas Tree Ornaments for AWA Christmas Tree for Children's		
	Jun-23	Jul-23
Activity	Count	Count
Number of ornaments needed every year	300	300
Ornaments carried over from 2022	42	42
Ornaments collected to date	40	52
Number of ornaments collected this month	12	76
Repeat contributors	1	3
New contributors	0	4
Total Members participating	3	7
Number of ornaments on hand	94	170
Ornaments needed	206	130
Percent of ornaments left to be collected	69%	43%
Percent of project time remaining	44%	33%

## AWA LIBRARY

The materials in the AWA Library are now available for checkout. Since this is a new system (it actually began in 2020 but right before the Covid shutdown) I'd like to go with the following procedures and see how well it works. Your feedback is welcome.

1. A chart listing the materials will be available on the AWA website. You can find it on the "Learning" tab at "Library Listing" which is a link to <https://alabamawoodturners.com/wp-content/uploads/2020/03/AWA-Library.pdf> The materials are grouped according to type: DVDs, Books, Magazines. If you want to check any item(s) out please let me know by sending an email to [alawoodturners@gmail.com](mailto:alawoodturners@gmail.com) prior to the next scheduled meeting. Please give me both the item number and its title so I can make sure I get the correct item.
2. The day of the meeting I'll pull these items from where they are stored. I'm going to plan to be in that room in the other building, i.e. the Red Mountain Makers space, from about 8:15 - 9:00 in case anyone wants to come browse and see what's in the library. Around 9:00 I'll bring any requested materials to the Hardware Park meeting room and check them out. I'll probably plan to stay at the meeting until around 9:30, but if you want an item and are going to be late let me know so I can stay until you get there.
3. Items will be checked out for one month, so they will be due back at the next monthly meeting. If you need to keep something longer please let me know; as long as no one else has requested it there shouldn't be a problem with keeping it an additional month. Questions, problems, suggestions, etc. can be sent to me at the above email address or see me at the meeting.

Thanks,  
Jane Rabey  
AWA Librarian

### Why join the AAW?

Plain and simple, you are enthusiastic about woodturning.

An AAW membership offers you access to the single largest portfolio of high-quality educational woodturning resources available in the world. Membership is the fastest way to learn and enhance your woodturning expertise.

#### An AAW membership can help you:

- Experience the remarkable world of woodturning.
- Connect with others who share your passion.
- Be an active and knowledgeable member of the woodturning community.
- Make a commitment to your own personal and creative development.
- Express your dedication to preserving woodturning for future generations.

#### With an AAW membership you have access to:

- 3,000+ online projects, articles, videos, and tips are in AAW's Explore! search tool. Get the best project instructions, technique guidelines, and information in just a few simple clicks. Easily searchable by topic and includes all interest areas.
- 12,000+ images of member work are in AAW's Forum gallery online. Get inspiration, ideas, and feedback simply. Connect with woodturning enthusiasts using this member-moderated virtual community.
- 475+ online videos are quickly searchable by topic in AAW's Video Source. Avoid the frustration of searching YouTube. Get relevant woodturning videos in just a few clicks. All videos are prescreened by the AAW for quality content and safety.
- 150+ issues of American Woodturner are online with a searchable index.
- 38+ issues of Woodturning FUNDamentals publication and the Woodturning FUNDamentals online learning portal offer one-stop basics. Helps newer turners build and expand their woodturning knowledge and skills safely with a curated selection of information, projects, tips, and videos.
- 365 affiliated chapters are all easily searchable in our directories. Find a chapter near you fast. Also, search for symposia, demonstrations, exhibitions, events, organizations, and schools, and more, quickly and easily.



# NORWEGIAN WOODTURNING CRUISE BY RON HERBSTER

In June my wife and I had an opportunity to go on a Norwegian Woodturning Cruise. More information about the specifics of the cruise can be found at “woodturningcruise” on Facebook.

The cruise brought together a wide variety of very talented crafts men and women from throughout the world that worked collectively to make this a unique experience. They gave “up close” demonstrations and often let observers try their hand at the project they were working on. Not everyone on the cruise was an experienced turner. There were opportunities to learn and work on one of the six lathes in the classroom or weather permitting on one of four lathes set up outside on the top deck. The demonstrators took turns helping when needed. Classes were also provided for pyrography, scroll saws, knife making, felting, chip carving, wire art, and photographing art for websites.

For twelve days we were able to not only watch top-notch artisans, but we also ate with them and swapped tales and stories (some were even true). At each port we were able to take excursions or just walk around the town to get a feel for Norway and the people living there. At each port local folks were invited to come aboard to see demonstrations and shop in the store. It couldn't have been more fun!



# WHAT EVERYONE HAS BEEN DOING



**HOWARD KING**

A pierced bowl made of Maple and dyed black.



**DWIGHT HOSTETTER**

Large bowl is about 16" in diameter and 6" tall. The shape is of my own design. The Indian blanket feature ring and diamonds were made using techniques described in Malcolm Tibbetts' book "The Art of Segmented Wood Turning". Woods used: Honduran Rosewood, Curly Maple, Padauk, Ebony, Holly, and dyed black and white veneers. While the bowl wall thickness is only 3/8" to 1/2", the bowl is unusually heavy due to the amount of the heavy dense Honduran Rosewood used as the main body.

**Lesson learned** – never use Padauk next to light-colored wood because of Padauk's color bleeding over to the light-colored wood when finish is applied.



**DWIGHT HOSTETTER**

Small maple bowl is for the August meeting Karl Harper Challenge. It is 5" tall and about 6.5" max diameter. It was designed using Segmented Pro software. It has 304 segments and a solid one-piece base. Woods used: Curly Maple, Walnut, Honduran Rosewood, Yellow Heart, and I'll leave everyone to guess the patterns' center wood.



# WHAT EVERYONE HAS BEEN DOING



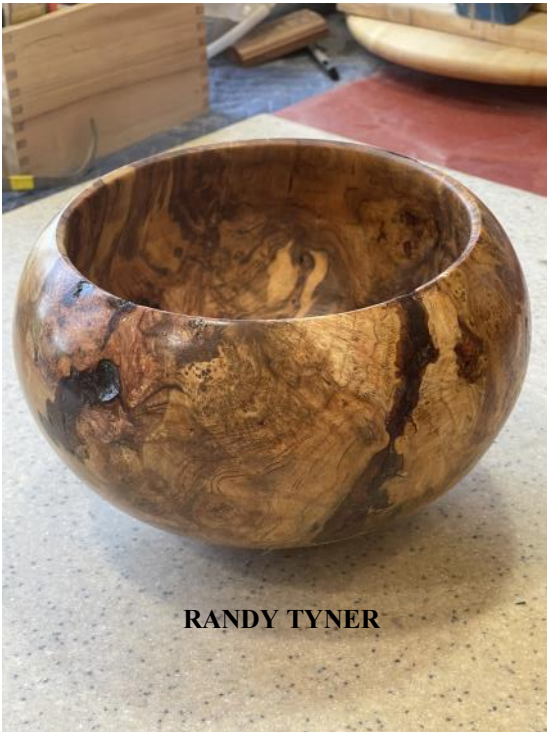
**JEFF WYATT**



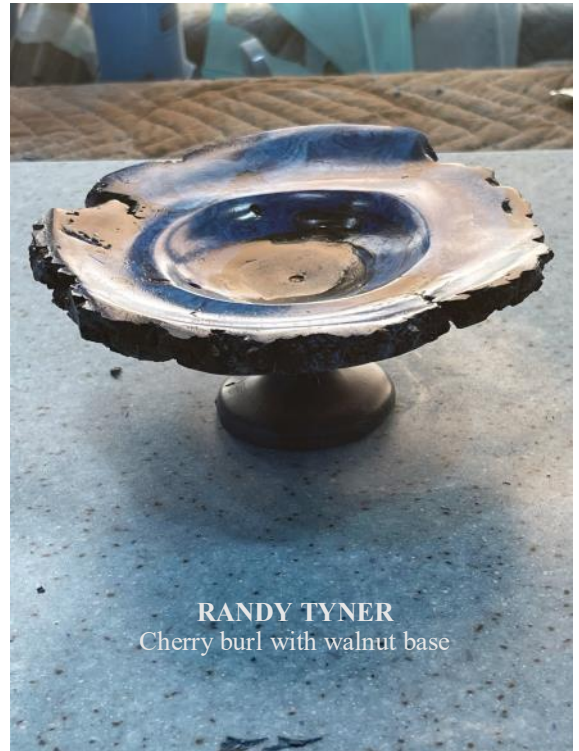
**JEFF WYATT**



**JEFF WYATT**  
Closeup of turned spindles



**RANDY TYNER**



**RANDY TYNER**  
Cherry burl with walnut base

**NEW still in the box**  
Nova Comet II DR midi lathe for sale  
\$500  
Contact Pete Marken at  
[p\\_marken@bellsouth.net](mailto:p_marken@bellsouth.net)



# WHAT EVERYONE HAS BEEN DOING



**RANDY TYNER**  
Cherry burl vase



**RANDY TYNER**



**RON HERBSTER**  
Getting ready for  
Christmas shows  
These bottom 3



# WHAT EVERYONE HAS BEEN DOING



JERRY HANCHEY



JERRY HANCHEY



TERRY TINGLE



SANDRA MCMILLIN



CARL CUMMINS





# WHAT EVERYONE HAS BEEN DOING



**JOHN SOWELL**



**RON HERBSTER**



**CARL CUMMINS**



**CARL CUMMINS**



**GREG OLIVER**



**SANDY BISHOP**

## The Karl Harper Perpetual Challenge

AWA has established a perpetual turning challenge in memory of Karl Harper. This challenge is an excellent remembrance of Karl as he continuously expressed a 'try anything' spirit and was an inspiration to us all.

This is how it works: A piece will be turned by a member to be presented at the next meeting. A name will be drawn from the sign-in sheet at that meeting. If the person whose name is drawn accepts, they will take that piece to keep and will bring a piece the following month. If they decline, then another name will be drawn until someone accepts the challenge.



If you question your skill level, don't! Karl never did! You are good enough at whatever level you are! Karl would want us to put a bag over our heads before we turned because he thought 'Lights are for people with disabilities!'

Sandra McMillan turned a hollow form for the July challenge, won by Dwight Hostetter.

If you want to watch the video of Karl Harper turning here is the link!  
[https://www.youtube.com/watch?v=n\\_XGRjlvMDk](https://www.youtube.com/watch?v=n_XGRjlvMDk)

COPY & PASTE  
Also on the AWA website.

### Turning Pens for Troops

Turning pens for the troops sponsored by Woodcraft has been a long-time project of our club. This project provides pen to our troops all over the world. Several of our members have met soldiers that have received a pen. All the service members speak of how much this meant to them and that they still have the pen. Last year, our club turned in over 300 pens! How the program works is that for every pen that we turn in Woodcraft gives us a slimline pen kit to make another one with. This makes it very important that if you pick up a pen kit at a meeting, that you complete the pen before the next meeting. This lets us get new kits to make more pens with. Also, you are not limited to using a pen kit from the club. You can make any pen that you want and donate to the project. Every kit that you pick up will have a Pen for Troops card in it. This is for you to write a message to the service member. Please be sure to sign the card. Currently, there are only a handful of members that are making pens for the project. Lee Beadles has taken this challenge to heart and has turned in 125 pens just this year! Please consider taking on the challenge of this project and Turn a Pen for our Troops. I know that we all want to thank and recognize our troops for what they do for us. So far this year, we have turned in over 265 pens.

David Fancher



## LEADERSHIP

President: Terry Tingle  
Vice President: Harold Deason  
Secretary: John Rhymes  
Treasurer: Carl Cummins  
Board: Scott Arnold  
Board: Tom Corbett

Board: John Sowell  
Board: Richard Serviss  
Librarian: Jane Rabey  
Training: Under Development  
Newsletter: Michelle Marken  
Webmaster: Carl Cummins