

Alabama Woodturners Association



Newsletter

APRIL 2022

A member of the American Association of Woodturners
MEETING IN PERSON THIS MONTH
Meeting time: The second Saturday of each month at 9 am
www.alabamawoodturners.com

APRIL AWA PRESIDENT'S NOTE

The president's challenge this month was to make an egg. That was most likely a real challenge. Shaping the egg is not as hard as having some kind of jig to turn the egg around and finish the other side. If you belong to the American Association of Woodturners (AAW), you would have found an instruction there on how to turn an egg. Of course, there are YouTube videos on how to turn eggs also. As in all projects, there are certain skills involved.

When I taught music lessons, I would get an occasional student who wanted to learn how to play a particular song. One student had no interest in learning notes or chords on the guitar. I explained that I could teach him how to play that one song, but if he would just learn a few chord progressions, and some basic rhythms, he would be able to play hundreds of songs. He learned that one song and could play it well. Then he learned another song, and he could play two songs. He never understood that by learning some basic skills, he could play whatever he wanted to play. I think the same is true in woodturning.

Most of us had something we wanted to make when we first got into woodturning. To make that "something," we had to learn certain skills. I would like to see us continue to increase our basic skills. Last month, Carl gave a demonstration on using the skew, and then gave a class that afternoon on how to use a skew. Three of us took that class, and we all agreed that we learned more in that class, than we had learned in a year. It's good to know how to use our tools. It is also good to know how to make "things." I am so thankful that we have so many in our club who are willing to help others learn skills. If you made or used a jig to make your egg, please bring that to our next meeting. We not only want to see your eggs, but we would like to see the jigs you used to make the eggs. May's president's challenge is to make the garden tool, the dibble. It can be made with or without a handle. We are thankful that Harold Deason has agreed to be our Vice-president. We could still use someone to be our librarian. Our library has lots of videos on "how to."

We look forward to another great demo and class this month!

Terry

CRAFT SUPPLIES USA
— THE WOODTURNERS CATALOG —

(800) 551-8876

<http://www.woodturnerscatalog.com>

WOODCRAFT
Helping You Make Wood Work®

In this issue:
President's Note - Page 1
This month's Demo info - Page 2
Birthdays Page - Page 2
New Meeting Place Directions - Page 3
Special Article & Announcements-Page 4
AAW Information - Page 7
What People are Doing - Page 8 – 10
Karl Harper Challenge - Page 11
Turn for the Troops - Page 11



**NEXT
PAGE**

APRIL DEMO BY CARY BONE

When I saw the gentleman that will present our April demo at the Bluff Park Art Show this past year, I was immediately taken by the beauty and craftsmanship of his pens, seam rippers, bottle stoppers, etc. Now I have tried casting resins quite a few times, but Cary Bone took it to another level. Mixing multiple shades of the same color to achieve a deep, rich effect with a shine that will blind you, he had produced some of the most gorgeous acrylic items I've ever seen. I immediately asked if he would demo for our club.

This will not be your standard demo. Cary is going to cover resins in depth, and he will also cover stabilizing wood (as well as other items). Whether you've used resins before or have always wanted to try it, you will learn a lot this coming Saturday. There may be turning if time permits, but the main focus is on every aspect of resin casting (types of resins, tools, dyes, powders, molds, etc.) with some stabilization thrown in for good measure.

Scott

CARY BONE BIO

"Grain Turner Wood & Resin Art is a "micro business" owned and operated by Cary Bone. Based in New Market, AL, I am the sole proprietor of Grain Turner and manage every aspect of the business to include procuring material, casting resin &/or hybrid blanks, stabilizing various hardwoods, turning each product, and marketing each piece via various outlets to include GrainTurner.com, Instagram, Facebook, and Craft Shows & Fine Art Shows.

I've been a wood turner for 4 years and each year my goal has been the same, strive to be better with each turn. This has resulted in gaining recognition by Southern Living Magazine (2020), AAA Explorer Magazine (Alabama Gift Guide 2021), Alabama Entrepreneur Podcast interview and receiving various craft show awards. While the recognition is nice, satisfaction is achieved when I've hit the marks on each piece (form, fit, function and finish). The challenge of demonstrating consistency and the unrealistic goal of achieving perfection, is what keeps me motivated.

As a woodworker, I also understand the importance of community involvement and giving back. I've had the pleasure of introducing several fellow woodworkers into pen turning. Additionally, I've established a YouTube channel to demonstrate techniques I use to create custom resin pours and turn various products. I love craft show season as it allows me to get others interested in the hobby, communicate process and techniques, and bring satisfaction to others by providing meaningful gift items."



APRIL BIRTHDAYS

JAMES VAUGH	4-3
SUSAN McCALLA	4-6
LARRY FRUGE	4-19
DARBY WHITMAN	4-28

Dues MUST be current to be included in the birthday list.

Birthday Door Prize News

AWA gives a birthday gift door prize to a turner who has a birthday during the month of that meeting. Here are the 'rules' for this year:

- 1) This is a door prize so, yes, you need to be at the meeting and stay for the drawing to win.
- 2) You need to make sure the Secretary and/or Newsletter Editor have your correct birth date. No fair changing your birth date in the middle of the year! You're stuck with the one they originally gave you!

MEMBERS DUES MUST BE CURRENT TO BE INCLUDED IN THE BIRTHDAY LIST.

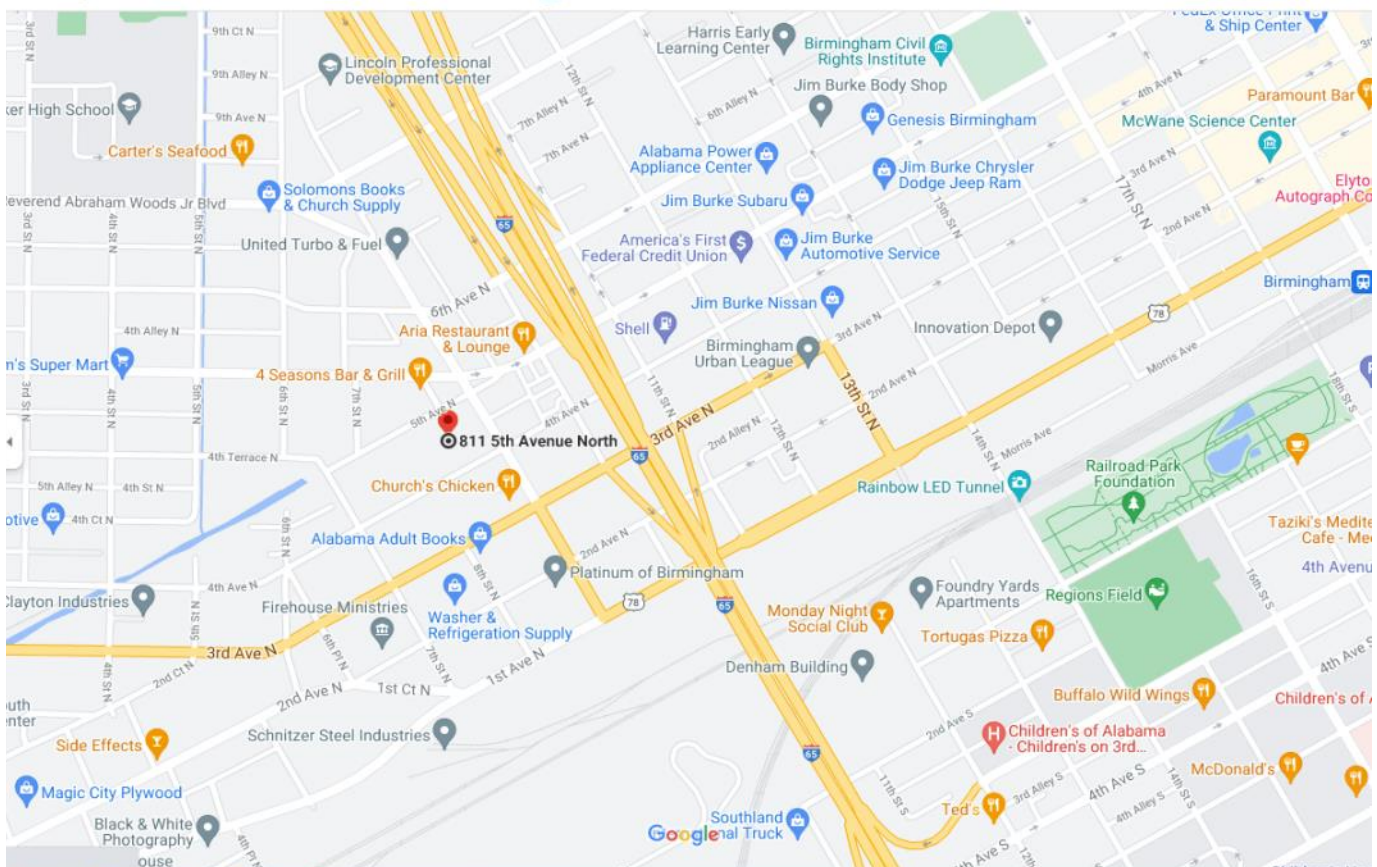


Our meeting place this month is Hardware Park (formerly Long-Lewis Hardware), downtown between 4th and 5th Ave. North. The exact address is

**811 5th Ave North
Birmingham, AL 35203**

You'll enter through this door.

**Make sure to look for our new
flag on the corner!**



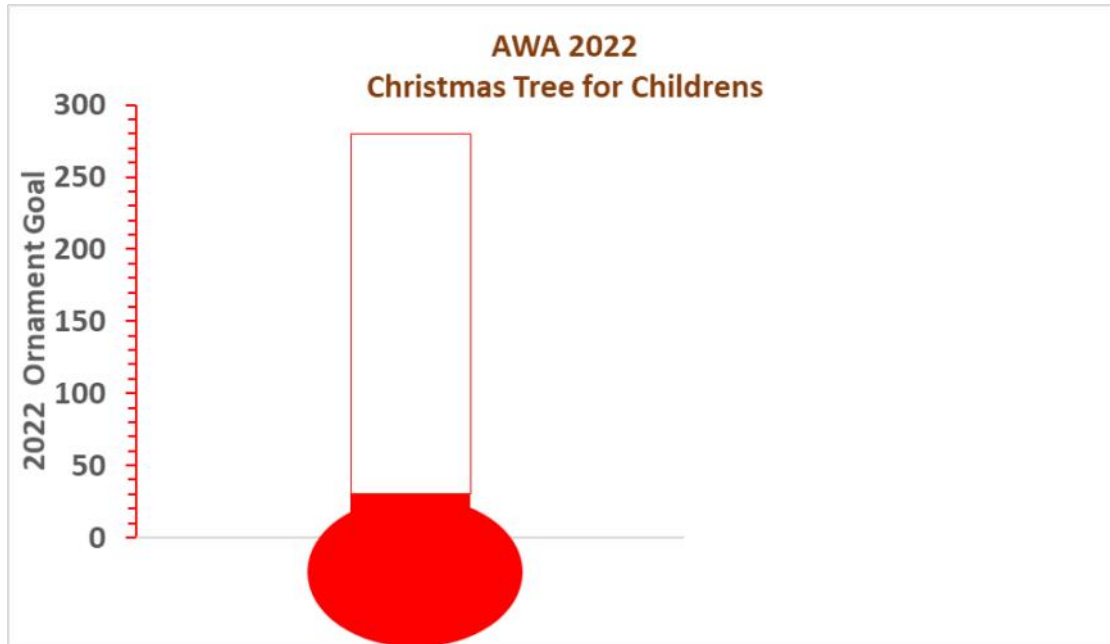


Children's
of Alabama®

Alabama Woodturners Association (AWA) Supporting Children's Hospital of Alabama



Many thanks to Ron Herbster and Carl Cummins for their contributions of Christmas Ornaments in March. We are ready to accept your ornaments at our meeting on April 9th and at every meeting through October 2022.



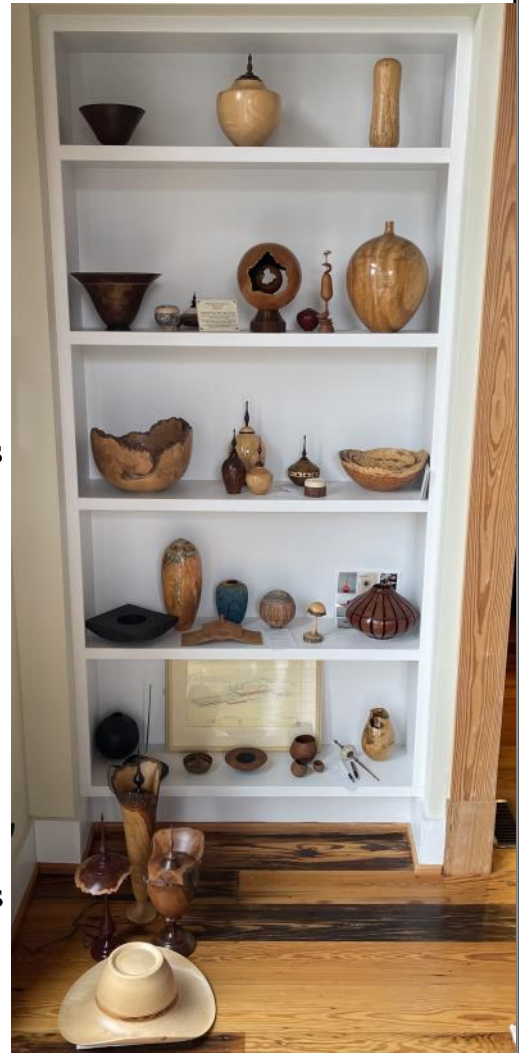
Bill Hubbard Donation to AWA

You probably already know about former member Bill Hubbard's generous donation of his property to UWA to create the Cahaba Biodiversity Center.

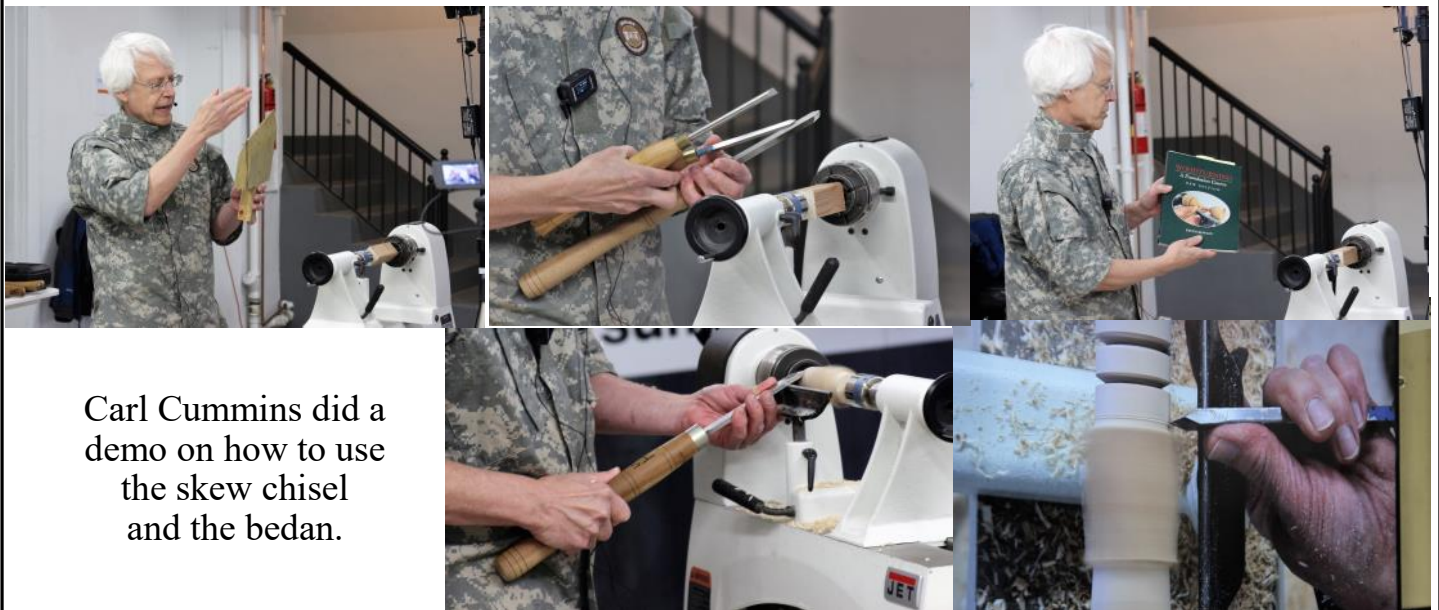
https://www.wbrc.com/2021/04/12/gift-ages/?fbclid=IwAR38FgHv6LoKpXPzIQgoXKt3cNYk0K_w6xpt2Z-Vx4a4S6nAkGZMt9CM60I

Bill made another generous donation to AWA: part of his woodturning collection. This includes works by internationally known turners Mike Mahoney, Richard Raffan, John Jordan, Dixie Biggs, Jimmy Clewes, and others. There are also pieces by AWA members Howard King and Carl Cummins. He gave this with the intention of us selling the pieces to raise money for AWA, plus the Cahaba Biodiversity Center Foundation will benefit. We are considering how to go about selling these pieces. You will hear all about it when we get further along.

We are considering using the eBay benefit for non-profits (among other things). **Do any of you have much experience with selling on eBay?**

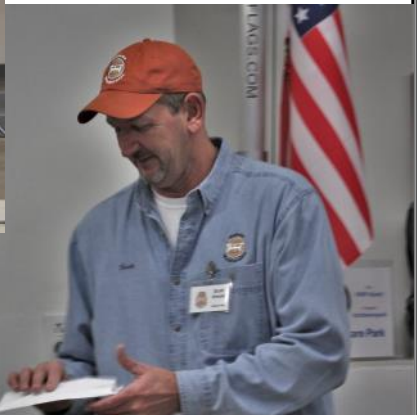


PICTURES FROM THE DEMO LAST MONTH



Carl Cummins did a demo on how to use the skew chisel and the bedan.

PICTURES FROM THE MEETING LAST MONTH



Why join the AAW?

Plain and simple, you are enthusiastic about woodturning.

An AAW membership offers you access to the single largest portfolio of high-quality educational woodturning resources available in the world. Membership is the fastest way to learn and enhance your woodturning expertise.

An AAW membership can help you:

- Experience the remarkable world of woodturning.
- Connect with others who share your passion.
- Be an active and knowledgeable member of the woodturning community.
- Make a commitment to your own personal and creative development.
- Express your dedication to preserving woodturning for future generations.

With an AAW membership you have access to:

- 3,000+ online projects, articles, videos, and tips are in AAW's Explore! search tool. Get the best project instructions, technique guidelines, and information in just a few simple clicks. Easily searchable by topic and includes all interest areas.
- 12,000+ images of member work are in AAW's Forum gallery online. Get inspiration, ideas, and feedback simply. Connect with woodturning enthusiasts using this member-moderated virtual community.
- 475+ online videos are quickly searchable by topic in AAW's Video Source. Avoid the frustration of searching YouTube. Get relevant woodturning videos in just a few clicks. All videos are prescreened by the AAW for quality content and safety.
- 150+ issues of American Woodturner are online with a searchable index.
- 38+ issues of Woodturning FUNDamentals publication and the Woodturning FUNDamentals online learning portal offer one-stop basics. Helps newer turners build and expand their woodturning knowledge and skills safely with a curated selection of information, projects, tips, and videos.
- 365 affiliated chapters are all easily searchable in our directories. Find a chapter near you fast. Also, search for symposia, demonstrations, exhibitions, events, organizations, and schools, and more, quickly and easily.

AMERICAN ASSOCIATION OF WOODTURNERS (AAW) NATIONAL SYMPOSIUM

The American Association of Woodturners is an organization that is committed to delivering the highest quality woodturning resources and education to its members. Today, the AAW has more than 16,000 members worldwide with 365+ local chapters, publishes the American Woodturner journal, organizes an annual International Symposium, sponsors woodturning outreach and education activities, and operates a gallery space in St. Paul MN's Landmark Center. Our organization, the AWA, is Local Chapter number 111 of AAW.

In June, AAW will present a live, In-Person Event, the AAW's Annual International Woodturning Symposium. The location is close, Chattanooga, TN. The dates are June 23-26. In 3 ½ days, there will be 100 compelling presentations to help us become better. If you decide to attend, please know that if we register as a club, we get a discount. Please inform Carl if you plan to go!

AAW also offers weekly newsletter articles and instructional videos. And they provide Zoom videos for members and visitors. For instance, on Saturday, February 19th at 2:00, AAW had a Zoom video demo "From Pen Turning to Pen Making" with Mark Dreyer and John Underhill which was excellent. Also scheduled on March 19th, at 1:00 p.m. AAW will be presenting Dale Larson "Cutting the best bowl from a tree," where Dale will tell how to cut intentionally to get the exact grain you want for your bowl. Cost is \$10 for members, \$15 for non-AAW members.

If you are not a member, check out their website to see all that they offer.

Web address is www.woodturner.org

WHAT EVERYONE HAS BEEN DOING



**HOWARD KING
FIGURED BUBINGA**



**HOWARD KING
WHITE OAK BURL**



**HOWARD KING
RED MALEE**



**JIM GORRIE
SPALETED OAK**



**JIM CORRIE
INK ON OAK**

WHAT EVERYONE HAS BEEN DOING



LEE BEADLES
BOTTLE OPENERS



LEE BEADLES
KEY CHAIN WHISTLES



LEE BEADLES
CAN OPENERS



MAURICE CLABAUGH
"Pear Basket"
Spalted Bradford Pear
14" w x 5" d



MAURICE CLABAUGH
"Pear Blossom"
Bradford Pear



MAURICE CLABAUGH
"Lovely Pecan"
Pecan,
11" w x 4" h

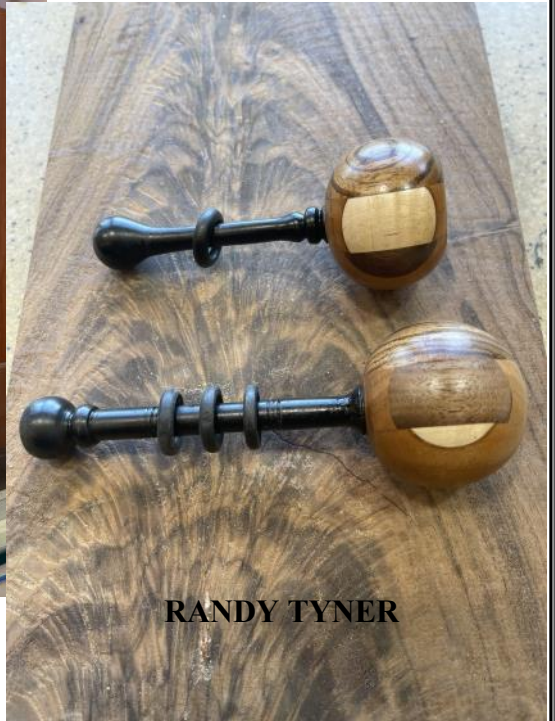
WHAT HAS EVERYONE BEEN DOING



RANDY TYNER



RANDY TYNER



RANDY TYNER



TERRY WHITE

From a huge Maple that fell at our local elementary school. The finish is the cutting board oil from the big box stores.



TERRY WHITE



**PEN TURNING CLASS
TAUGHT BY TERRY TINGLE**

Blind Veteran Wood Turner



If you want to watch the video of Karl turning here is the link!

https://www.youtube.com/watch?v=n_XGRjlvMDk

COPY & PASTE
Also on the AWA website.

The Karl Harper Perpetual Challenge

AWA has established a perpetual turning challenge in memory of Karl Harper. This challenge is an excellent remembrance of Karl as he continuously expressed a 'try anything' spirit and was an inspiration to us all.

This is how it works: A piece will be turned by a member to be presented at the next meeting. A name will be drawn from the sign-in sheet at that meeting. If the person whose name is drawn accepts, they will take that piece to keep and will bring a piece the following month. If they decline, then another name will be drawn until someone accepts the challenge.

If you question your skill level, don't! Karl never did! You are good enough at whatever level you are! Karl would want us to put a bag over our heads before we turned because he thought 'Lights are for people with disabilities!'

We will resume this challenge once we start meeting in person again.

Turn for the Troops

Special thanks to David Fancher for volunteering to head the Turn For Troops project in conjunction with Woodcraft. If you have pens you need to turn in, or if you'd like to participate, please contact David at dfancher631@gmail.com, or email any of the club officers.

UPDATE: Sent 60 pens to Woodcraft, we are getting close to 300 pens. I will have pen kits and blanks at the next meeting.

60 PENS FOR
TURN FOR TROOPS



Leadership

- President: Terry Tingle
- Vice President: Harold Deason
- Secretary: John Rhymes
- Treasurer: Carl Cummins
- Board: Scott Arnold
- Board: Tom Corbett
- Board: John Sowell
- Board: Richard Serviss
- Librarian: **volunteer needed**
- Training: Under Development
- Newsletter: Michelle Marken
- Webmaster: Carl Cummins

Support Alabama Woodturners Association Inc.

When you shop at smile.amazon.com,
Amazon donates.

Go to smile.amazon.com

amazon smile

<https://smile.amazon.com/ch/04-3655976>