

Alabama Woodturners Association



Newsletter

JANUARY 2022

A member of the American Association of Woodturners

MEETING ON ZOOM THIS MONTH

Meeting time: The second Saturday of each month at 9 am
www.alabamawoodturners.com

PRESIDENT'S NOTE

When I was in High School, I wanted to make things with wood. Our High School had a shop, but because I was "college prep" I was not allowed to take shop. It wasn't long after that that I borrowed my Dad's Black and Decker jig saw, drew up plans for a multi-layered plant stand, bought some wood, and started cutting. It was primitive. It barely stood straight, but it actually held six plants.

Fast forward to about ten years ago, a good friend gave me an old Craftsman lathe with a bunch of tools. It sat in my basement for a year before David Fancher taught me how to turn a pen. I was hooked. It wasn't long after that, that David invited me to a club meeting. I enjoyed the meetings, but honestly didn't understand much of anything for a year or so. Then, it began to click. After becoming fairly proficient at making pens, I taught my twin brother Tim how to make pens, and helped him find a good, used lathe, and have helped him set up his shop. Then, I taught one of my nephews how to turn pens. Right after that, I helped another nephew pick out a lathe, and will soon help him get started turning on his new midi lathe. All it took for me to get hooked, was to have a friend like David Fancher teach me how to turn one thing, and invite me to a club meeting.

This club has inspired me and kept me motivated to stay in woodworking. There have been times in the last two years that I had to miss our meetings, but only because I had to work via zoom and was not available the second Saturday of each month. Fortunately, I no longer have to work Saturday mornings. I accepted the Presidents position, because I love this club, and I want to do my part in making it the best it can be. It is very exciting that we have this new place to meet, and all the new possibilities it offers. Having said that, the board, after much discussion and consideration, has decided that for **this month, we will meet via zoom.** It is not what we want. But the numbers are rising, right now. The good news is that it looks like the Omicron variant might, ironically be the key to our getting over this pandemic. Our hope is that next month, the situation will be much improved. With that hope in mind, we are already looking forward to meeting in person in February. I hope when we start meeting in person again, you will consider bringing a friend. Who knows what interest you may spark?

Do you want to learn how to turn something? Let us know.

Do you want to teach a class or be a mentor? Let us know.

Do you want to volunteer? Please let us know.

Happy New Year! Terry Tingle

CRAFT SUPPLIES USA
— THE WOODTURNERS CATALOG —

(800) 551-8876

<http://www.woodturnerscatalog.com>

WOODCRAFT
Helping You Make Wood Work®

In this issue:

President's Note - Page 1

This month's Demo info - Page 2

Birthdays Page - Page 2

Note from Scott - Page 3

Collaboration Corner - Page 4

What People are Doing & Who's Who - Page 5 - 8

Karl Harper Challenge - Page 9

Turn for the Troops - Page 9



**NEXT
PAGE**

JANUARY DEMONSTRATOR PHIL ROSE



Phil Rose from Rochester NY gave us an excellent demo on multi-axis turning in March 2021 (see March and April newsletters). We invited him back this month to do a demo on boxes, but he said he will go well beyond a single turned box. In this demonstration, Phil will review various end-grain box design options, show different strategies to turn boxes, and demonstrate a few post-turning embellishment options.

Check out some of his box designs in his on-line gallery at

<https://dragonsrose.studio/gallery>



JANUARY BIRTHDAYS

RICHARD SERVISS	2
TERRY WHITE	6
BILL HUBBARD	8
BILL BRADSHAW	11
PAT JOHNSON	12
EDDY JOWERS	13
DWIGHT HOSTETTER	14
JERRY CONWAY	22
JOHN SOWELL	22
NANCY DEASON	29

Birthday Door Prize News

AWA gives a birthday gift door prize to a turner who has a birthday during the month of that meeting. Here are the 'rules' for this year:

- 1) This is a door prize so, yes, you need to be at the meeting and stay for the drawing to win.
- 2) You need to make sure the Secretary and/or Newsletter Editor have your correct birth date. No fair changing your birth date in the middle of the year! You're stuck with the one they originally gave you!

MEMBERS DUES MUST BE CURRENT TO BE INCLUDED IN THE BIRTHDAY LIST.

WHAT HAPPENED IN 2021 AND WILL HAPPEN IN 2022

As most of you are aware, the club has partnered with the Red Mountain Makers (RMM) recently in an effort to improve both organizations and promote woodturning. This collaboration was a case of perfect timing for us, as RMM was in the middle of planning a move from Woodlawn to Hardware Park downtown and our time at Homewood Senior Center (HSC) was being terminated. While RMM will tap into the wealth of turning experience AWA brings to the table, we will reap quite a few benefits as well:

1) Through our partnership, we have been able to transition our monthly meeting location from HSC to Hardware Park downtown. HSC was planning to raise our rent from \$100/month to \$450, which would have negatively affected our finances in a major way. They also were requiring the removal of several of our club items like tables and some AV equipment. Eventually they asked that we vacate permanently. We now have an agreement with Hardware Park to host our monthly meetings in their Lobby for \$150/month thanks to our association with RMM. While that covers our meeting, housing all our equipment and monthly class would typically incur a separate cost with RMM. Based on our monthly fee with Hardware Park, RMM has graciously waived any monetary fee for storage and our class in exchange for the club teaching two classes a month. While details are still being worked out, we know we will pick the projects but need your help to ensure we have multiple instructors for every class.

2) While we were permitted to have one class a month at HSC, we now have the opportunity to do multiple classes and mentoring sessions every month at RMM.

3) Class sizes will be increased as we will be able to utilize RMM's lathes as well.

4) Previously, any preparations for our classes required visits to member's shops to prepare blanks and use multiple tools. We will now have access to RMM's Woodworking Shop to prepare for classes.

5) RMM utilizes an extensive marketing program to publicize their organization and promote its mission. AWA will be promoted through that program as well. This should translate not only to an increase in membership for us, but also an increase in diversity and younger turners. We desperately need this to grow the club and increase member involvement.

6) Mentors will now have a central location to meet and tutor new turners. We are still working out details on available hours, requirements, etc.

7) We now have access to a facility and equipment that would allow AWA to host a nationally known woodturner (Cindy Drozda, Ashley Harwood, Trent Bosch, etc.) for multiple days of classes and demo. We have not had this opportunity since Woodcraft closed their classroom in 2016.

8) RMM has discounted their Basic and Keyholder memberships 10% for AWA members. For more detail on their membership costs and benefits, check out: <https://redmountainmakers.wildapricot.org/>

While most key issues of this partnership have been agreed upon, there are quite a few that are still being discussed. Even some items that have been mentioned in the list above still have to be fine-tuned. The devil is truly in the details!

I understand that members may have specific questions that have not been addressed here and I encourage you to reach out to any of the Officers or Board Members to discuss them. We will make every effort to answer your questions and if we don't know, we'll find out. I'm sure that there are opportunities or challenges we've yet to think of, so please share your feedback.

I have been extremely encouraged by RMM's open-minded attitude and willingness to try anything and everything that looks to help our club. They realize, as do we, that in the end both clubs will benefit. I truly believe this partnership has the potential to improve and energize our club!

Scott Arnold

COLLABORATION CORNER

DECEMBER'S PROBLEM

A new member asks, "How do I know if my piece needs a foot or should be flat?"

Putting a foot on a piece can be quite subjective. The two main schools of thought are, "Does it make the piece more attractive?" and, in the case of utilitarian pieces, "Does it make the piece more stable and usable?"

There are also a variety of considerations like foot width, height and design to name a few. Is it a turned foot or a carved foot? If carved, how many feet? So while an in-depth explanation of the question could take up an entire page, perhaps we should just leave it with this being truly a case of beauty being in the eye of the beholder.

AWA Officers

The President - Terry Tingle has agreed to be our new president!

- leads the monthly meeting
- calls Board meetings as needed to make plans and discuss issues
- with approval from the Board sets the direction for the club and makes decisions about new purchases/expenses
- oversees other functions such as recruiting volunteers or appointing committees (A/V, Turn For Troops, Christmas Tree Ornaments, Library, etc.)
- serves as the spokesperson for the club.

We are STILL looking to fill Officer and Board positions and need volunteers/nominations now. Here are descriptions of the roles:

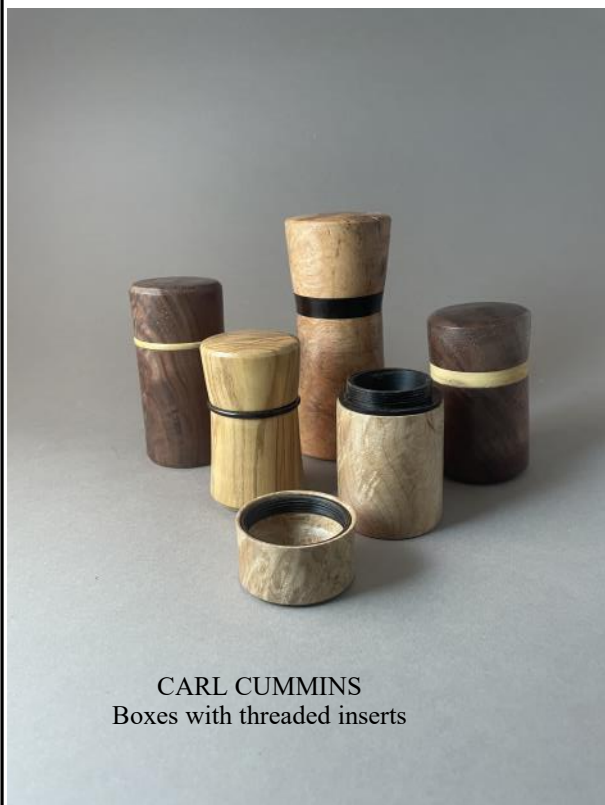
The Vice President and Program Director

- fills in when President is absent
- leads the Program Committee to arrange programs for monthly meetings.

Member of Board of Directors

- provides ideas and feedback about the activities, direction, and finances of the club.

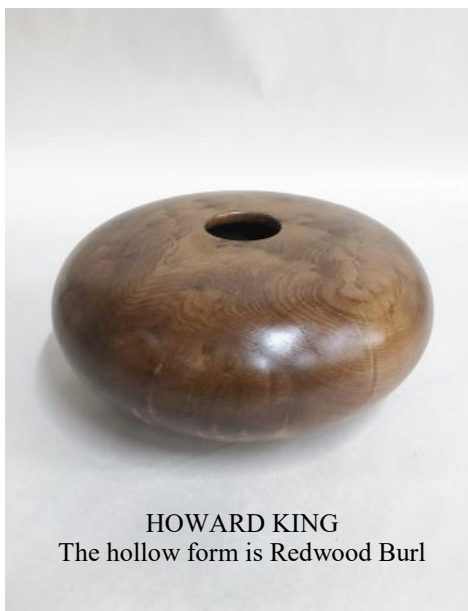
WHAT EVERYONE HAS BEEN DOING



CARL CUMMINS
Boxes with threaded inserts



CARL CUMMINS
Surprise Box to celebrate the New Year



HOWARD KING
The hollow form is Redwood Burl



JOHN RHYMES
Small Oak Bowl



RANDY TYNER

WHAT EVERYONE HAS BEEN DOING



JEFF WYATT



JEFF WYATT



MARK HARRIS

First real Hollow Form from a Red Oak Burl

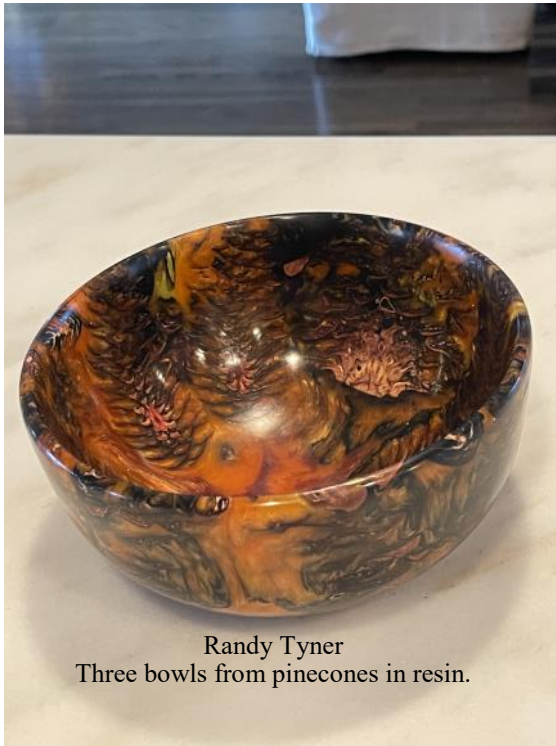


VIEW
2

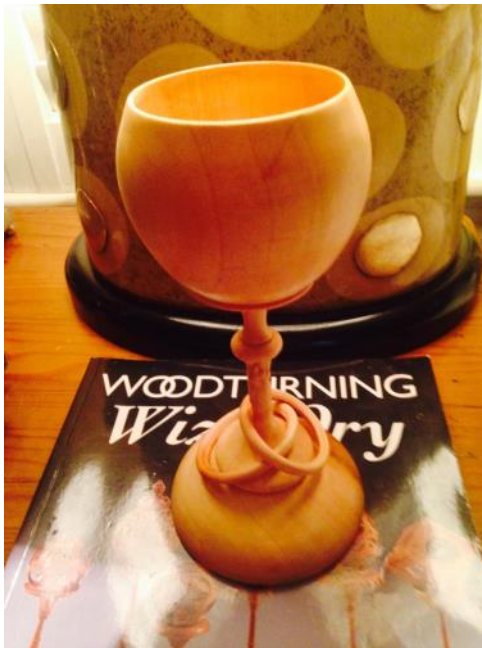


JOHN KILLIAN

WHAT RANDY TYNER HAS BEEN DOING



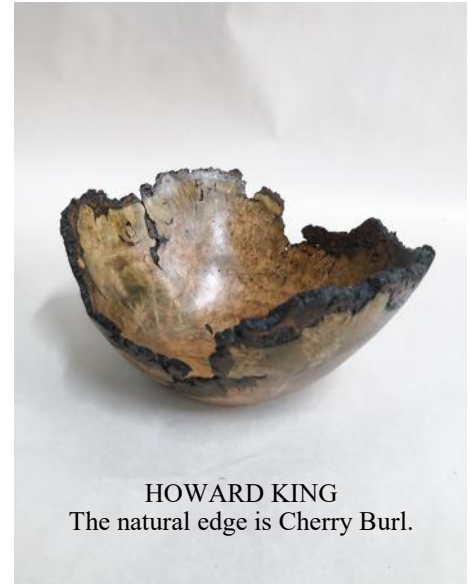
Randy Tyner
Three bowls from pinecones in resin.



WHAT EVERYONE HAS BEEN DOING



JOHN RHYMES
Natural edge oak



HOWARD KING
The natural edge is Cherry Burl.

Auction

AWA conducts an auction each year (almost) as a fundraiser. Items include woodturnings and tools, all of which are donated, so the club receives 100% of the proceeds. These go toward basic expenses such as rent, insurance, and guest demonstrators.

This year we have a large assortment of items available, more than we could handle at our December meeting. Therefore we postponed the auction and restarted with bidding through email, and will conclude with live bidding at our January meeting. The list of items and current bids is on our website, and the link is provided in email.

The first two items from Cindy Drozda and Trent Bosch are works that they demonstrated for us in 2020. The hollow form from John Sowell is the one he demonstrated for us in October. Most items (nearly all the tools) were donated by Phil Duffy. Other turnings were donated by Howard King, Joan Bickel (from the collection of Wilford Bickel), and Pete Marken. Many thanks to all who donated!

Thanks also to all participants! You can still submit bids in email until Thursday evening. Please see your email for the link to the list of all items. We will do the final live bidding after the demo. This will all be on Zoom. Contact Carl Cummins at alawoodturners@gmail.com for any questions.

Blind Veteran Wood Turner



If you want to watch the video of Karl turning here is the link!

https://www.youtube.com/watch?v=n_XGRjlvMDk

COPY & PASTE
Also on the AWA website.

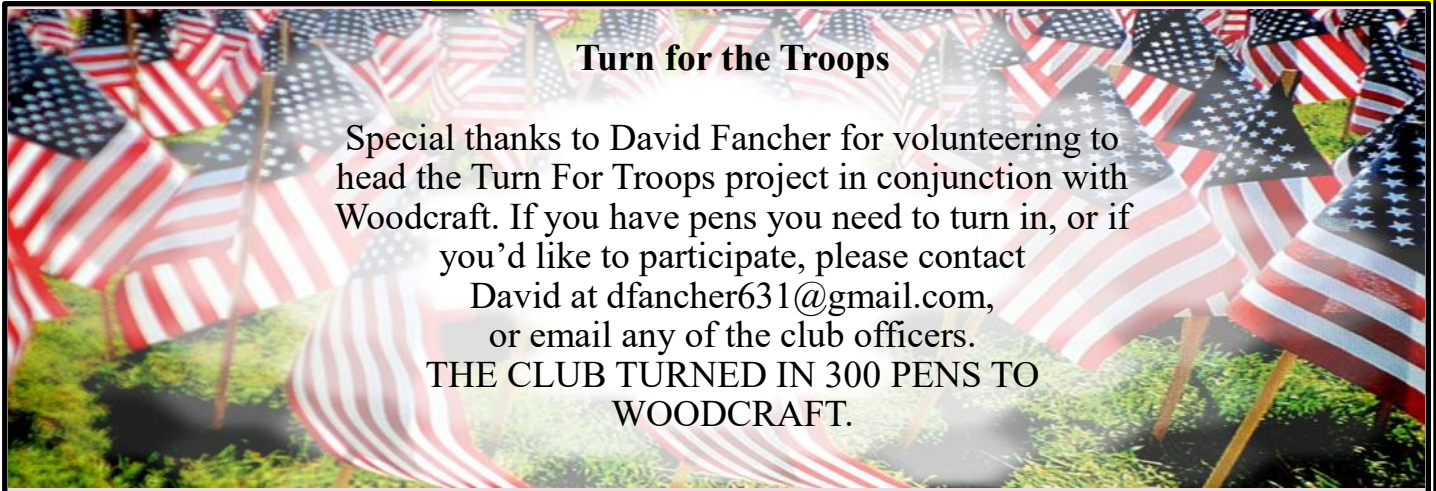
The Karl Harper Perpetual Challenge

AWA has established a perpetual turning challenge in memory of Karl Harper. This challenge is an excellent remembrance of Karl as he continuously expressed a 'try anything' spirit and was an inspiration to us all.

This is how it works: A piece will be turned by a member to be presented at the next meeting. A name will be drawn from the sign-in sheet at that meeting. If the person whose name is drawn accepts, they will take that piece to keep and will bring a piece the following month. If they decline, then another name will be drawn until someone accepts the challenge.

If you question your skill level, don't! Karl never did! You are good enough at whatever level you are! Karl would want us to put a bag over our heads before we turned because he thought 'Lights are for people with disabilities!'

We will resume this challenge once we start meeting in person again.



Turn for the Troops

Special thanks to David Fancher for volunteering to head the Turn For Troops project in conjunction with Woodcraft. If you have pens you need to turn in, or if you'd like to participate, please contact David at dfancher631@gmail.com, or email any of the club officers.

THE CLUB TURNED IN 300 PENS TO WOODCRAFT.

Leadership

President: Terry Tingle
Vice President: Vacant
Secretary: John Rhymes
Treasurer: Carl Cummins
Board: Scott Arnold
Board: Tom Corbett
Training: Under Development
Newsletter: Michelle Marken
Webmaster: Carl Cummins

Support Alabama Woodturners Association Inc.

When you shop at smile.amazon.com,
Amazon donates.

[Go to smile.amazon.com](https://smile.amazon.com)

amazonsmile

<https://smile.amazon.com/ch/04-3655976>