

# Alabama Woodturners Association



# Newsletter

November 2019

A member of the American Association of Woodturners  
Meeting location: Homewood Senior Center, 816 Oak Grove Rd., Homewood, AL 35209  
Meeting time: The second Saturday of each month at 9 am  
[www.alabamawoodturners.com](http://www.alabamawoodturners.com)

## Carl Cummins November Demonstration: Lattice-Top Box Three Ways



At the recent symposium “Turning Southern Style” I watched Hans Weissflog demonstrate his lattice-top box. When I returned home with new-found courage, I gave it a try and managed to make one similar.

I had previously found an article by Jason Clark giving instructions but hadn’t tried it. I see now that Jason’s procedure is different from Hans’. Upon thinking about both methods I thought of a third way to make the eccentric rings. I will show all three methods.

**CRAFT SUPPLIES USA**  
— THE WOODTURNERS CATALOG —

(800) 551-8876

<http://www.woodturnerscatalog.com>



In this issue:

Meeting Recap - Page 2

President’s Challenge - Page 3

**NEW!! Get to know the members - 4**

President’s notes - Page 5

Birthdays - Page 6

Turn & Tell - Page 7

Karl Harper Challenge - Page 8

Opportunities & Library - Page 8



Turn  
The  
Page  
Here!

## November AWA meeting and afternoon training class

Our woodturning Saturday is almost upon us! As usual, in addition to the morning meeting we will offer an afternoon class, including options from beginner to advanced. This month's demonstration and class will be presented by Carl Cummins, President of AWA. See elsewhere in this newsletter his article describing his demo project: a lattice-top box. This project is rated "Intermediate/Advanced", but the class is open to AWA members of all levels of experience. There will be no charge for the class, but please do reserve your place in advance.

Newer turners will get help with tool handling and technique while making a standard lidded box. You may use tools provided by the club or bring your own.

Those who want to try the lattice top should let Doc Phil know so Carl can prepare special materials. Recommended tools include a thin (1/16") parting tool, spindle gouge, small bowl gouge, and a scraper for flattening a surface. Other tools you like are always a good idea.

Again, sign up early by texting your name to Doc Phil Fortmeyer at 205-612-7496 and let him know which project you want to do. We'll will have 6 lathes, and Carl will provide supplies at no expense! So, all we need to help you, is for you to be in the class. Looking forward to a full class and great fun.

## October - Frank Bowers



# President's Challenge 2019

**The October challenge, an ornament, is especially important now that we need to have enough to decorate a tree very soon. Also note the challenge for November.**

This series is designed to encourage everyone to have some fun at the lathe and perhaps try something different from your usual projects. These topics may seem easy or difficult, but you don't need to worry about creating a great piece; you only need to try. One additional requirement is that pieces submitted **must be turned within this year 2019**. At the end of the year I'll award a prize to the one who participates most consistently.

If you missed a previous month. You may bring in an item for a previous month's challenge at any time, and it still counts for that previous month.

## **January: egg**

Turning an egg shape is a good exercise in tool control, cutting a continuously changing curve, and in creating a desired shape. This is not easy at first, but practice in the long run will pay dividends in all your turning. As your skill improves you could create a collection in various interesting woods.

## **February: funnel**

Most of us have turned a bowl with a hole in the bottom (oops!), but that's not what I'm looking for. A funnel should have a spout on the bottom. Note that the spout can be small or large. You can challenge yourself by making it with a thin wall.

## **March: loose-lid covered box**

As opposed to a friction-fit lid or a threaded lid, one should be able to open the box with one hand simply by lifting the lid. I suggest a box with the diameter larger than the height. This could be turned from face-grain blanks or end-grain, but I suggest dry wood so it will retain its shape. The lid could be in matching or contrasting wood.

## **April: ogee**

This classic shape can be a challenge to get looking nice. You can choose any type of project to include an ogee, for example a bowl, or candleholder, ornament, vase, platter, etc.

## **May: added color**

You probably recall Jack Capps' demo of "hydro dipping" (aka "marbling"). This is just one of endless possibilities. You also have free choice of any item to turn, such as an ornament, bottle-stopper, box, bowl, hollow-form, etc.

## **June: jewelry**

There are many possibilities here. Not long ago Jean Cline demonstrated making bracelets. Another possibility is earrings shaped like tiny Christmas ornaments. Pendants are popular. Ring core bands came on the market not long ago (see [woodturnerscatalog.com](http://woodturnerscatalog.com)).

## **July: one project made from three or more different types of wood**

You can choose any project and any woods. Components may be glued together or loosely assembled. It's nice to see the woods identified if known.

## **August: wand (think "magic wand")**

Magic optional

## President's Challenge 2019 continued

### September: two Nick Cook projects

Nick turned 12 items in less than 2 hours. Surely you can do 2 in under 4 weeks! Choose 2 or more of the following: garden dibble, spurtle, honey dipper, snowman, snowman/icicle, spinning top, salt shaker, ring holder, lidded box, coffee scoop, bottle opener.

### October: ornament

Our Christmas Tree decoration project deadline arrives in October, so let's all bring in one or more ornaments to show and donate to the project. But don't save everything for October! Please bring in ornaments all through the year so we don't have to worry about meeting the goal.

### November: bowl turned from wet wood

Turn a bowl from wet wood, going all the way to final shape and thickness in one session. Also make record of the date you turned it. When you bring it to the November meeting we can see how it did after drying. The sooner you start, the better we'll see how it moves.

### December: CHRISTMAS PARTY!!!

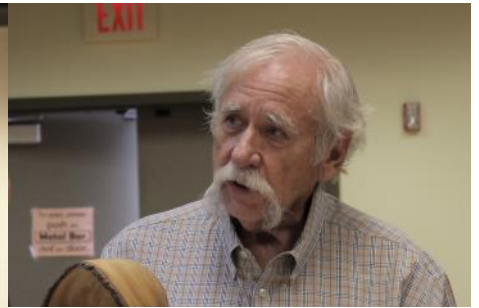
## GET TO KNOW THE MEMBERS



WAYNE BAGWELL



SANDY BISHOP



HAROLD DEASON



HOWARD KING



JOHN SOWELL  
HOWARD KING  
BILL CALDERWOOD

# We're in the 4th Quarter

by Carl Cummins, AWA President

Now it's November, in the last quarter of the year. In football, the 4th quarter reminds us that time is running out, time to stay focused on the goal, or if we're behind, then work harder to make up. But what does that mean for our club? We too have goals to reach this year.

## Turn For Troops and Christmas Ornaments

To all those who participated in these projects, I'll say, "Thank you!" and I'm proud of the way you stepped up to help us meet our goals. We donated over 200 pens which will be given as part of Turn For Troops to U. S. Military personnel on active duty or in rehabilitation. As of the October meeting we have submitted over 300 ornaments which will decorate a tree at Children's Hospital for their fundraiser.

There is still time to participate. We will again be happy to receive your donations of pens or ornaments at our November meeting. The Turn For Troops project officially wraps up on Veterans Day. The tree will be decorated at Children's Hospital on Sunday November 10. Thanks again!

## Election of New Officers

We will vote at the December meeting for officers to serve in the year ahead. A nominating committee is working to name candidates. If you would like to nominate yourself or recommend someone, please contact me (Carl at [cjcummins@gmail.com](mailto:cjcummins@gmail.com)).

## End-of-Year Auction

Once again, we will hold an auction at our December meeting. We will offer woodturnings by our demonstrators and other members, nice tools donated by members, and a Rikon 70-100 lathe formerly used in our classroom. I'll provide more information in the December newsletter. Meanwhile please think if you have a woodturning, or tools, or other item of interest to donate. Our auction last year was a big success, so I'm optimistic for this year.

All proceeds will go toward bringing out-of-town demonstrators next year. All members are invited to donate pieces for this event. If you can bring your donations to the November meeting, then I can include photos in the December newsletter.

## Looking Ahead to December

Next month we will hold our traditional party, a time for relaxing and socializing.

The main features will be:

**GIFT EXCHANGE** – A voluntary activity, if you bring in a gift you will receive a gift.

**RAFFEL GRAND PRIZES**– We will draw from all tickets received this year. Only members with dues already paid will be eligible.

**AUCTION**– This will be our final fund raiser for the year. We will offer items donated by you and our demonstrators. Please consider donating a turned item, or a woodworking tool, or a nice piece of wood. These funds raised will go toward bringing in demonstrators from outside our club. This was quite successful last year, so I am optimistic we can do as well or better.

**OFFICER ELECTIONS** – If you want to run for an office or nominate someone, please let me know now.

And of course...FOOD!

**FOOD** – The club will supply meats and beverages. I will send out a request for members to bring side dishes and desserts.

# President's Challenge — SEPTEMBER



RON HERBSTER



JOHN RYMES



CARL CUMMINS



JERRY HANCHY



CARL CUMMINS


  
**WE NEED MORE PARTICIPATION  
 FOR THE  
 PRESIDENTS CHALLENGE.**

## AWA November Birthdays

ROLAND NELSON	11-3
BRUCE GIBSON	11-4
CHUCK SMITH	11-6
JOHN JOHNSON	11-19
KEN WARR	11-22
JUSTIN MILLER	11-23
GREGG OLIVER	11.29



# October Turn and Tell Highlights



HOWARD KING



HOWARD KING



HOWARD KING



BILL HUBBARD

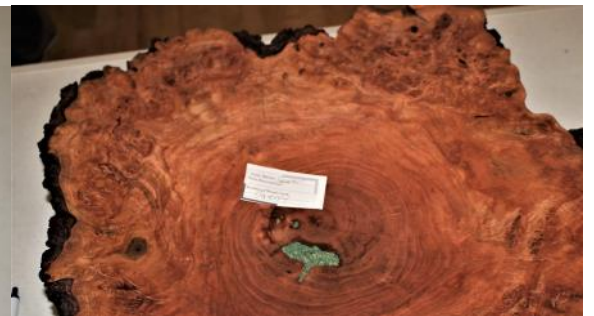
Bring in your projects! Even the OOPS. That's how we learn.



CARL CUMMINS



HAROLD DEASON



JOHN SOWELL

## *Birthday Door Prize News*

AWA gives a birthday gift door prize to a turner who has a birthday during the month of that meeting. Here are the 'rules' for this year:

- 1) This is a door prize so, yes, you need to be at the meeting and stay for the drawing to win.
- 2) You need to make sure the Secretary and/or Newsletter Editor have your correct birth date. No fair changing your birth date in the middle of the year! You're stuck with the one they originally gave you!



## The Karl Harper Perpetual Challenge

AWA has established a perpetual turning challenge in memory of Karl Harper. This challenge is an excellent remembrance of Karl as he continuously expressed a 'try anything' spirit and was an inspiration to us all.

This is how it works: A piece will be turned by a member to be presented at the next meeting. A name will be drawn from the sign-in sheet at that meeting. If the person whose name is drawn accepts, they will take that piece to keep and will bring a piece the following month. If they decline, then another name will be drawn until someone accepts the challenge.

If you question your skill level, don't! Karl never did! You are good enough at whatever level you are! Karl would want us to put a bag over our heads before we turned because he thought 'Lights are for people with disabilities!'

October challenger was Phil Duffy, candle sticks. The challenger for November is Terry Tingle.

If you want to watch the video of Karl turning here is the link!

[https://www.youtube.com/watch?v=n\\_XGRjlvMDk](https://www.youtube.com/watch?v=n_XGRjlvMDk)

COPY & PASTE

### **Opportunities To Help Others**

In our Turn For Troops effort we have over 200 pens turned in, exceeding our goal! More pens will be welcome, especially if you have not turned one in as yet. (See Carl's message on page 3)

### **AWA Library**

We are starting a new procedure for checking items out of the library. Soon the list of books and DVD's will be posted on our website. To check out an item simply email our librarian Wayne Bagwell at [wbagwell@gmail.com](mailto:wbagwell@gmail.com) and he will bring it to you at the next meeting. If you have any items to return, please give those to Wayne (or Carl Cummins - President).

**PLEASE DON'T FORGET TO DONATE FOR THE COFFEE AND DONUTS.**

### **UPCOMING MEETINGS!**

**December :**  
*Christmas Party*

