

Alabama Woodturners Association



Newsletter

August 2017

A member of the American Association of Woodturners
Meeting location: Homewood Senior Center, 816 Oak Grove Rd., Homewood, AL 35209
Meeting time: The second Saturday of each month at 9 am
www.alabamawoodturners.com

AUGUST DEMO



Back by popular demand....Pete Marken will be doing our August demo showcasing Woodturner PRO software, a program he uses for his segmented turning. This program helps woodturners simplify segmented pieces. A visit to the website, <http://woodturnerpro.com>, will show you video tutorials and an Introduction to Woodturner PRO video. You can also sign up for the Woodturner PRO newsletter.

Pete worked out a deal with the developer to give our club members a 25% discount (regular price, \$79) on the purchase of the software. If you are interested, please see Pete for the discount code.

Pete will also true up some segmented rings and demonstrate his stacking and aligning fixture.

CRAFT SUPPLIES USA
— THE WOODTURNERS CATALOG —

(800) 551-8876

<http://www.woodturnerscatalog.com>



In this issue:

- Turning a Bowl Without Chucks - Page 2
- July Meeting Recap - Page 3
- Birthdays - Page 4
- Turning Southern Style - Page 4
- July Turn & Tell - Page 6
- For Sale - Page 8

**NEXT
PLEASE**
→

Hey! Wanna learn more about turning? Or help someone else learn more about turning?

Mentoring is available Saturday afternoons in the Craft Room at the Homewood Senior Center. Sessions start one hour after the demonstration ends or 1 pm.

AWA owns lathes, chucks and tools to use in class, but you may also bring your own.

If you are interested in participating either as a student or a mentor, Phil would love to talk to you and sign you up!

Phil Fortmeyer - (205) 612-7496

Turning a Bowl Without Chucks

by Fred Holder

Chucks are wonderful time savers, but are not necessary to turn wooden shapes such as bowls and hollow forms. In fact, many woodturners mount all of these shapes on faceplates and turn the entire vessel on a single mounting then use some form of home-made jam chuck to turn the foot after the bowl is completely turned. Even though I have a number of chucks, I often use a jam chuck instead of a chuck. To basically use the stuff that comes with your lathe, here is the way to do it:

1. Mount the bowl blank between centers, but with the grain of the wood being perpendicular to the axis of rotation and the planned foot of the bowl toward the tailstock center. Balance it as well as possible and run the lathe at its minimum speed. Start small first (4" to 6" in diameter).
2. With the bowl blank mounted between centers, turn the outside of the bowl to shape and turn a foot for the bowl. Don't make the foot too small on your first few bowls, leave them around 1/3 of the diameter, a nice functional size. Leave the tailcenter mark in the foot; i.e., don't turn it away. You can turn the bottom of the foot so that it will have a flat area to fit into a jam fit chuck, but leave a little tenon in the center with the center point in it. You'll need that later. Sand and finish the outside of the bowl.
3. Remove the bowl from the lathe and mount the faceplate with a piece of scrap wood mounted on it. Turn the face of the wood nice and flat. Then turn a recess in the center that is deep enough to bottom the turned foot of the bowl and bring the bottom surface of the bowl shape to touch the top of the scrap piece, but still small enough that you cannot slip the foot into the recess. You will have to cut a deeper recess in the center to accept the center tenon you left on to retain the center in the foot. In case you get it a tiny bit too large (i.e., a slip fit) you can sometimes take up a part of the space with a paper towel.
4. When the recess is almost large enough to accept the bowl blank, place the foot against the recess and bring up the tailstock. Apply pressure with the tailstock. Then with a mallet, tap around the top of the bowl while increasing pressure with the tailstock. If you were close enough to size, your foot should be able to be pressed into the recess until the top of the scrap piece touches the end of the bowl. Turn the bowl by hand to check for runout. Turn on the lathe, again at its slowest speed and check for runout by touching the finished outside surface of the bowl along the bottom side of the bowl. If it seems to be acceptable, it is unlikely that you'll get it perfect the first few times. Practice makes perfect.
5. Now, with the tail center still in the top of the bowl, start hollowing. Leave the tailstock in as long as possible and turn so that you have a little column 1/2" to 1" in diameter in the center of the bowl. If possible, turn the bowl to final depth with this column still in the center. Then break off the column, move the tailstock out of the way and sand and finish the bowl inside. At this point, your bowl is completely finished inside and outside, except for the foot.
6. You can generally remove the bowl from the waste block by applying pulling force on the bowl, but not enough to break it, while tapping the waste block with a mallet. Don't tap too hard or pull too hard. If it will not come loose, you can likely part away the waste block until the bowl comes free.
7. Now mount a piece of wood on the faceplate so that it will give you a disk that is larger than the diameter of your bowl. Turn a recess that your bowl lip will snugly fit into. It is best if this recess is a snug enough fit that you can press the bowl into it with a good friction fit. Now, bring up the tailstock to hold the bowl securely in this new jam-fit chuck. Turn the foot to final form leaving a little tenon in the center for the tailstock, sand and apply finish. If your mounting in the jam-fit chuck is secure enough, you can back off the tailstock and gently turn away the little tenon, sand and finish.
8. Remove the finished bowl from the jam-fit chuck by applying pulling pressure while tapping the jam-fit chuck. With luck, it will pop out without any damage.

This information is provided by *More Woodturning Magazine*. Please visit their website: www.morewoodturningmagazine.com.

July Meeting Recap

Thank you Howard King, Justin Miller and Royal Ritchey for our Christmas in July demo!



Howard King



Justin Miller



Royal Ritchey

AWA August Birthdays

Bryan McFee - 8/1

Paul Genereux - 8/16

Tom Corbett - 8/22

Clyde Hoover - 8/11

Bob Rosser - 8/17

Lee Beadles - 8/26

Bill West - 8/15

Sandy Bishop - 8/28

Turning Southern Style 2017: September 15-17 at the Dalton, GA Convention Center FINAL 15 DAYS to SAVE \$30

If you have already registered for the Turning Southern Style symposium, thank you very much! If you are planning to attend but have not yet registered, please don't wait any longer!

Effective August 15: The registration fee of \$155 goes up to \$185. The free registration for youth ends and they have to pay \$30 to attend. As more and more people register, the hotel selection also starts to diminish. If you want your first choice of hotels, you should register and make your hotel reservation as soon as possible.

6 Great Demonstrators:

- Nick Cook • Beth Ireland • Glenn Lucas • Harvey Meyer • Pascal Oudet • Joe Ruminski

Vendor Lineup: There have been a couple changes, but it is still a great lineup. The complete list is on the webpage.

Free Scholarships: We will be giving away: 1 tuition only scholarship to John C Campbell, 1 full scholarship to John C Campbell, 1 full scholarship to Arrowmont, and 2 full scholarships to the school of your choice (either John C. Campbell or Arrowmont). To be eligible, you must be a registered attendee and you must be present at the Saturday banquet during the drawing.

Instant Gallery: Will be open throughout the symposium. We invite each participant to display up to four pieces of his/her work for all to enjoy. Symposium attendees will vote on a People's Choice winner who will be reimbursed up to \$100 spent at any of the vendors during the symposium.

Beads of Courage: Please consider bringing a handmade box, which will be donated to Beads of Courage. Symposium attendees will be given one ticket for each box they bring and five randomly drawn winners will be reimbursed for up to \$50 spent at any of the vendors at the symposium. (Bringing multiple boxes improves your chances of winning but you can only win once.) If you need any beads for the boxes, let us know.

Youth are Free: If registered before August 15. This year, for the first time, each registered attendee can bring a youth (under the age of 18) free of charge. We will even buy them dinner at the Banquet. This allows you the opportunity to bring your child, grandchild or student who you are mentoring free of charge. So far, a number of registered attendees have indicated they will be bringing a child or grandchild - what a wonderful way to spend a weekend!

For more information or to register, please visit www.gawoodturner.org.

If you have questions, please contact Steve Mellott at smellott@hotmail.com or [404-642-3222](tel:404-642-3222).

We look forward to seeing you in September!

The Karl Harper Perpetual Challenge

AWA has established a perpetual turning challenge in memory of Karl Harper. This challenge is an excellent remembrance of Karl as he continuously expressed a 'try anything' spirit and was an inspiration to us all. This is the process: a piece will be turned by a member to be presented at the next meeting, a name will be drawn from those attending and, if accepted, they will take that piece to keep and will bring a piece the following month. If they decline, then another name will be drawn. If you question your skill level, don't! Karl never did! You are good enough at whatever level you are! Karl would want us to put a bag over our heads before we turned because he thought 'Lights are for people with disabilities!'

At right is the piece brought by the July challenger.



PRESIDENT'S CHALLENGE

August - Embellished turning, can be paint, dye, chatter tooled, pyrography

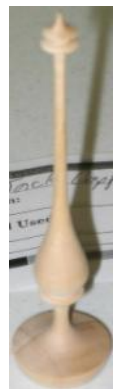
September - Christmas ornament

October - Child's toy

November - Hammer or gavel

Please bring a piece and show what you can do!

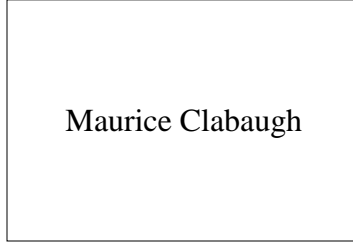
July President's Challenge - Finials
L to R: Carl Cummins, Howard King, Myra Harper, Jack Capps



July Turn and Tell Highlights



Gary Hales



Maurice Clabaugh



Christmas Ornaments



?



?



?



John Jackman



July Turn and Tell Highlights, cont.



Myra Harper



Pete Marken



Brent Clayton



Howard King



Jack Capps



FOR SALE



This is a Delta Industrial 1642 220 v 20 amp, variable speed, reversible, 1 1/4 x 8 spindle, 0-3400 rpm lathe with long and short tool rests, faceplate, live tail center, spur drive center, knock out bar and moveable head stock. Lathe is in excellent working order and would still be using but for a recent upgrade. Asking \$1,100 or reasonable offer. Chuck and cone tail center not included. Ballast not needed but is available for free. Lathe has been disassembled for ease of movement. Easy assembly.

John Sowell
sowellj@bellsouth.net