



# Alabama Woodturners Association

# AWA Newsletter

August 2015



A member of the American Association of Woodturners

Location: Homewood Senior Center at 816 Oak Grove Road, Homewood, AL 35209  
Web Site: [www.alabamawoodturners.com](http://www.alabamawoodturners.com)

## Coming Events

August 8-Dennis Paullus~  
'Unique Carved Acorn Box'

September 12-Mark St Leger  
~'Extraordinary Boxes'

October 10-Jess Walls~  
'Platter with Offset Bowl'

November 14-Round Robin

December 12-Christmas  
Party/Luncheon

January 9-TBD

February 13-TBD

March 12-TBD

April 9-TBD



### Inside This Issue:

July Demonstrator, Mike Zinser-Page 2

Saturday Afternoon Class-Page 2  
and 5

Turn and Tell-Page 5 and 6

Raffle/Birthday News-Page 3

President's Challenge-Page 4

Treasurer's Report -Page 4

Handouts from Mike Zinser-Pages 7  
and 8

Handout from Dennis Paullus-Page 9

## August- Dennis Paullus "Unique Carved Acorn Box"

### Woodturner and Sculptor from Arlington, TN

I have been a builder and a maker all of my life. I didn't discover the world of woodturning until I received a lathe for Christmas in 1997 – which started a journey of learning and exploration that continues today.



After 18 years I am still excited about turning, teaching, and demonstrating; and my work celebrates the colors and natural patterns of the wood.

I especially enjoy the traditional turning of bowls and vessels as well as carving and embellishing techniques.

I'm a full time Artist, Teacher and Demonstrator. I travel though out the U.S. to Art Shows and to demonstrate at Woodturning clubs.

You can see some of my work at [dennispaulus.pro](http://dennispaulus.pro)



### Artist Statement on [dennispaulus.pro](http://dennispaulus.pro):

It's all about the wood.

I have always been a builder and a maker, but it was not until I was given a wood lathe by my parents in 1997 that I discovered the world of woodturning.



I have always liked wood for its integrity, strength, and versatility; now I am also in love with its varying grain patterns, colors, and its deeper, more spiritual aspects.

I never get tired of wood's beauty. I work hard to honor and celebrate wood and its character in each piece I create.

### \*\*Notice\*\*

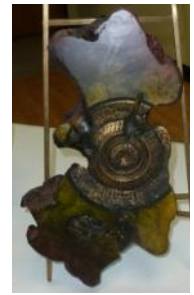
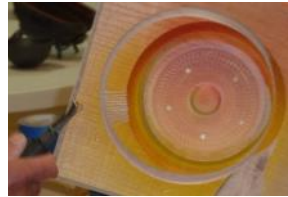


**How many Christmas ornaments have you made and turned in?** As of our August meeting, there are only 139 days until Christmas but, more importantly, 85 days until we decorate the Christmas tree at Children's Hospital!

**Do you have an August birthday?** If so, and your name is not on the Birthday News page, please see Jean or Amy at the sign in table or email us at [clineclan1@gmail.com](mailto:clineclan1@gmail.com) or [leobenefield@gmail.com](mailto:leobenefield@gmail.com).



# Mike Zinser-July Demonstrator



## Upcoming Saturday Afternoon Mentoring Opportunities for 2015

August  
**Dennis Paullus-Acorn Box**

September  
**Mark St. Leger-Special Classes**  
(More information coming!)

October  
More information coming

See 'Doc Phil' Fortmeyer to sign  
up and for more information.

## Saturday Afternoon Mentoring (Starts about 1 hour after the morning session ends or about 1:00)

Dennis Paullus, our guest demonstrator for the morning session, will be teaching a class in making his beautiful acorn boxes!

See Page 2 for future mentoring opportunities. AWA owns lathes, chucks and tools necessary to use in classes but you may also bring your own tools. Training is held in the Craft Room at the Homewood Senior Center.

**If you are interested in participating either as a student or a mentor, Phil would love to talk to you and sign you up! Phil Fortmeyer-(205) 612-7496.**

The June birthday prize was won by Gary Garris whose birthday is July 22.

The birthday prize for August is a Kobalt 6X-speed 32 piece screwdriver set.

Who will take it home? Check out the list of contenders below.



### Welcome to New Members:

Scott Arnold-Vestavia Hills  
Greg Dobbs-Pinson  
James Elder-Vestavia  
Clyde Hoover-Birmingham  
Martin Howell-Birmingham

### Raffle/ Birthday Gift Door Prize News

The regular raffle prize for August is a Portamate 6-shelf wood storage rack!



\$1 each ~~~~~ \$5 for 6 tickets ~~~~~ \$10 for 13 tickets

**Do you have an interesting raffle idea or a product you'd like to win? Please see Jean or Amy at the raffle/sign in table.**

If you've been to the meetings for the last few months or actually read the newsletter, you've noticed that the AWA has been giving a birthday gift door prize to a turner who has a birthday during the month of that meeting.

Here are the 'rules' for 2015 as they stand now:

- 1) This is a door prize so, yes, you need to be at the meeting to win.
- 2) You need to make sure Jean and/or Amy have your correct birthdate. No fair changing your birthdate in the middle of the year! You're stuck with the one they originally gave you!
- 3) We have prizes for the entire year that have been numbered. The prize winner for the current month (i.e. July) will draw the prize number for the next month (i.e. August) so Amy and I don't have to bring all of the prizes to all of the meetings. (We sometimes have a hard time just getting us to the meetings!)

## Happy Birthday to AWA's August

### Sunbathers!

Clyde Hoover (New Member)-August 11

Karl Harper-August 12

Bill West-August 15

Paul Genereux-August 16

Tom Corbett-August 22

Lee Beadles-August 26

Sandy Bishop-August 28

# President's Challenge-June

Turning between centers on 3 or more axis but no eccentric chuck!



## President's Challenges For 2015

### February-Done!

Something you'd use or find in the kitchen

### March-Done!

Worst blowout or break you kept as a reminder

### April-Done!

Spindle work turned +80% with a skew

### May-Done!

Ball-Round as round can be but without using a jig!

### June-Done!

Hollow form

### July

Turning between centers on 3 or more axis but no eccentric chuck!

### August

Turning from 3 or more pieces glued together

### September

Christmas ornament

### October

Natural edge bowl (bark or not)

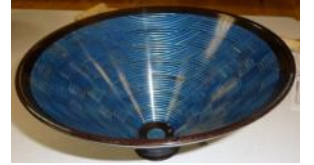
### November

Mushrooms

Alabama Woodturners Association Treasurer's Report July 11, 2015		Income From Dues for 2015	Average Annual Expenses		
Balance on hand	\$6,583.79	<b>New Members</b>		Rent (\$100/month)	\$1,200.00
Cash on hand	\$176.00	Individual Memberships-9	\$315.00	Insurance (The Hartford)	\$455.00
Total	\$6,759.79	Family Memberships-3	\$120.00	Donuts (Approx. \$45/month)	\$550.00
		<b>Renewals</b>		Coffee Supplies	\$200.00
Outstanding checks	\$933.57	Individual Memberships-67	\$2,345.00	Christmas Lunch	\$300.00
		Family Memberships-7	\$280.00	Website	\$120.00
		Mailed Newsletter-1	\$40.00	Paper Bank Statement Fee	\$36.00
		Total	\$3,105.00	Total	\$2,861.00
				Plus costs of demonstrators, program costs, supplies, etc.	
				2014 Demonstrator costs	\$3,262.00
				2015 Demonstrator costs (to date)	\$1,720.00



# How'd They Do That?



# Saturday Mentoring Session



# July Turn and Tell



First Row-Pete Marken, Terry White, Tommy Hartline, Lynn Baswell, Justin Miller, Bill Peyton, Michelle Marken

Second Row-John Sowell, Perry Andrews, Jerry Hanchey, Dwight Hostetter

Not shown-Carl Cummins, Royal Ritchie, John Taylor

## July Turn and Tell

Michelle Marken-Bocote Pen

John Sowell-Pear Cane

Lynn Baswell-Kingwood and Bradford Pear Vases

Bill Peyton

Pete Marken-Baltic Birch Plywood dyed blue Basketweave Bowl and First Segmented Bowl (1993) Cherry, Maple and Purpleheart

Carl Cummins-Cherry Multi Axis Form

Perry Andrews-Black Walnut Form

Royal Ritchie-Box Elder Ornaments

Jerry Hanchey-Box Elder and Maple Shallow Bowl

Dwight Hostetter-Walnut, Cherry, Purpleheart and Osage Orange Turkey Calls

John Taylor-Walnut and Maple Pen

Terry White-Maple, Myrtlewood and Purpleheart 'Just Forms'

Tommy Hartline-Maple /Walnut and Cherry

Justin Miller-Box Elder Natural Edge Bowl and Ornament

Watermelon is 92% water, which is why it is so refreshing.

Watermelon is a vine-like flowering plant originally from southern Africa. Its fruit, which is also called watermelon, is a special kind referred to by botanists as a pepo, a berry which has a thick rind (exocarp) and fleshy center (mesocarp and endocarp).

The Guinness Book of World Records states that the heaviest watermelon weighed 262 pounds.

To learn more interesting watermelon facts, check out [www.watermelon.org](http://www.watermelon.org).



# Additional Information From Mike Zinser's Demonstration

Mike Zinser

615/292-8652 h

615/480-3025 c

[mike.zinser@yahoo.com](mailto:mike.zinser@yahoo.com)

When I was unpacking on Sunday from the Birmingham demonstration, I found there were a few things that I didn't either have time to talk about or forgot to talk about in my presentation. Maybe listing them, and a brief description will add to and help with understanding.

Speckling: sometimes when I'm applying black, or a dark color I have dripped on an area unintentionally. As it won't sand out, I incorporate it into the design by speckling with the color using a short and stiff speckling brush. Maybe an old toothbrush, cut short would work.

Masking off: Cardstock or any stiff paper makes for a good masking off system. Either blue tape in place by taking 4" or so, roll it to stick like double sided tape, and cover areas you want to protect when spraying other colors.

Oak turnings: Maybe a center medallion and the remainder of the wall hanging sprayed/brushed black. While still on the same center point, loosen the face plate and insert a wedge to VERY SLIGHTLY take it off axis, tighten screws and with a LIGHT pull cut take some of the black off giving fresh surface to apply other colors.

Though my turnings were displayed on stands, most are intended as wall hangings. The two hanging systems I use are keyhole slots cut with a router and one small triangle picture frame hanger (from Home Depot). I discussed spirit stains from Craft Supplies, but leather dyes (Tandy Leather), India Ink, Transtints liquids (mine from Woodcraft-dilute with water or denatured alcohol) or Transfast powders (again from Woodcraft-mix with water).

The MasterCarver has so many more options to use in embellishing than I could show but I find it to be an invaluable tool. I showed the Rotary Cutter and the V cutter for veining. There are so many other cutters and grinding and burrs for use.

With the large angle grinder there are other grinding attachments besides the sanding flap I used that can be used in embellishing.

I did mention, but again if you go to [www.tnwoodturners.org](http://www.tnwoodturners.org) newsletter dated April 2012, you may find additional information from my earlier presentation.

Hopefully this additional information will be of use. I very much enjoyed my morning with you and thanks Jack for the rare earth magnet suggestion. Please feel free to call or email me if you have questions.

The last thing I should have mentioned is the 2016 Tennessee Association of Woodturners Symposium scheduled for January 29 and January 30, 2016 at the Franklin Marriott Hotel, Franklin, TN. Our presenters will be Clay Foster, Rudy Lopez, Glenn Lucas and Bob Rosand. More information will be available soon at [www.tnwoodturners.org](http://www.tnwoodturners.org). Please consider attending.

Mike

# Handout From Mike Zinser's Demonstration

Mike Zinser  
615/292-8652 h  
615/480-3025 c  
[mike.zinser@yahoo.com](mailto:mike.zinser@yahoo.com)

Thanks for having me here in Birmingham for your meeting today. This document will list sources for some of the supplies I'll be using.

My mentors in what I do are the teachers in three classes I was fortunate enough to have taken at either Arrowmont School for Arts and Crafts or John C. Campbell Folk School.

Frank Penta – [www.woodspriteturnings.com](http://www.woodspriteturnings.com)

Nick Agar – [www.turningintoart.com](http://www.turningintoart.com)

Doug Fisher – [www.douglasjfisher.com](http://www.douglasjfisher.com)

Hopefully I take something from each of them and combine their methods into my turnings without coming anywhere close to copying their work.

Craft Supplies-Artisans Dyes – [www.woodturnerscatalog.com](http://www.woodturnerscatalog.com)

Wood World of Texas-Chestnut Stains - [www.woodworldtx.com](http://www.woodworldtx.com)

Tandy Leather- Fiebing's Leather Dye – USMC Black, and other colors

Rex Art Supply-Goldfinger – [www.rexart.com](http://www.rexart.com) (RubNBuff from Michael's is a substitute)

Liming wax, BriWax – Woodcraft

Gesso, Copper Basic Liquitex, Lumiere Acrylic colors and Liquitex Interference colors – Michael's, Hobby Lobby or JoAnn stores

Mouth Atomizer – google it or in Nashville at Jerry's Artorama

A paint manufacturer – white and green paint pigments

The embellishing tools/equipment at my shop are too many to pack up to bring and could be a whole other demo, I mention them and some of the suppliers:

Dental drill and burrs – good dentist friend who replaced older equipment – use #2 and #4 round burrs with a few others.

Wood burner with various tips (1-A, 6-A, 10-A & 10-B) are favorites

Master Carver – large burrs - carving mostly with V blades – Rotary Chisels [www.rotarychisel.com](http://www.rotarychisel.com)

Dremel rotary tool

Angle grinder with grinding and polishing flap disk

Surely I have left something out you want to know. Please feel free to call, text or email me with any question that might come up.

Mike



# Dennis Paullus's Acorn Box with Carved Top

## tools and materials

2 dry end grain blocks of wood (I like contrasting colors) about 3" square x 4"-5" long  
spindle roughing gouge 1" - 1 1/2"  
spindle gouge 1/2" or 3/8"  
3/8" drill bit with handle  
round nose scraper 3/4" wide x 1/4" thick  
bedan 3/8"  
parting tool 1/8"  
calipers  
micro carver( electric)

- 1 Mount block of wood between centers of lathe; rough turn to cylinder with spindle roughing gouge. Turn tenon on one end with bedan. Do this for both pieces.
- 2 Mount piece of wood for bottom of Acorn Box in chuck and true up the end; put small divot in end for drill bit.
- 3 Drill depth of inside with drill bit. Using spindle gouge, hollow inside of Acorn Box bottom to finished size, can use round nose scraper to fine tune inside of box.
- 4 Shape outside of bottom to acorn shape with spindle gouge, leaving a small portion still attached to lathe on the small end. Sand inside and out side of box bottom. Then part from lathe and set aside.
- 5 Mount block of wood for Acorn Top in chuck and true up end. Mark size of bottom onto wood with calipers.
- 6 Using a bedan, hollow top to fit bottom approx. 1/2" - 5/8" deep. Can use round nose scraper to detail inside of top. The fit should be slightly tapered for a snug fit.
- 7 Use box top as jam chuck to mount acorn bottom to finish turn bottom of acorn shape. then finish sand bottom.
- 8 Use spindle gouge to turn rough shape of outside of Acorn top and stem. Part off from lathe.
- 9 Now carve top, I usually divide top into 5 sections vertically. Using round cylinder carving burr with flat end carve into box top at section lines. You will create 5 convex lobes on box top. The finish from the medium grit burr will create a nice texture on the box top. Now you are done.

